



Clemas & Co Ltd

Industrial Cleaning Equipment
Sales - Hire - Service

I-VAC DRY VACUUM CLEANER OPERATOR MANUAL



Clemas & Co. Unit 5 Ashchurch Business Centre, Alexandra Way, Tewkesbury,
Gloucestershire, GL20 8NB.

Tel: 01684 850777

Fax: 01684 850707

Email: info@clemas.co.uk

Web: www.clemas.co.uk



22.0094.83
K.10.22.0094.83 [10PCS]
K.100.22.0094.83 [100PCS]



K.1.S.220107.1004



K.1.22.9045.610_32



K.1.S.21.6342.302_MU



K.1.02.0010.0



K.1.03.0026.15



K.1.S.02.0031.5



K.1.70.0168.00[BLACK]
K.1.70.0168.10[RED]
K.1.70.0168.701[BLUE]



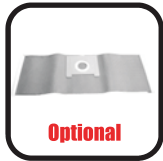
K.1.02.0032.5



K.1.77.0012.0 [BLACK]
K.1.77.0012.1 [RED]
K.1.77.0012.701 [BLUE]



K.1.02.0040.5



22.0094.0
K.10.22.0094.0 [10PCS]
K.100.22.0094.0 [100PCS]



K.1.02.0001.66/0

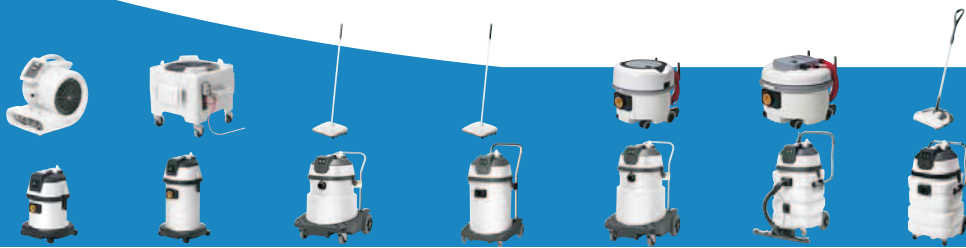


**MY NAME IS
HI-FILTRATION 6.0**



Hi-Filtration 6.0

**DUTCH
TECHNOLOGY
INSIDE**





About the Machine

Logo

Fast Dry use only

Machine Description C06 FAST 230V EUR 32MM H/L
220-240V, 50Hz, 850W

Machine Code Production code: C06.FAS.1115C
Model: C06
Serial no.:

Company & Address *Distributed by:*
Fast Europe B.V.
Hoppenkuil 27 a
5626 DD Eindhoven
The Netherlands
www.fast-products.nl

CB Approved by CQC
CN18370

RoHS

78.0479.0015.08

Personal Protective Equipment

PPE

that may be required for certain operations. See manual in standard use not applicable.



Caution Floorsign



Protective Clothing
NA



Eye Protection
NA



Hat Protection
NA



Dust Protection
NA



Ear Protection
NA



Safety Floorwear
NA

NOTE: A risk assessment should be conducted to decide what PPE should be worn.

Technical Specifications

Voltage	220-240Volt	Weight (product)	6.2 kg
Motor	850 Watt	Height	350 mm
Material	PP	Diameter accessories	32 mm
Suction Power	2400 mm	Cable Length	15 meter
Air Speed	50 L/sec	Capacity (paper bag)	6 Ltr
Sound Level	62 dB	CBM	0.0970



(ORIGINAL INSTRUCTIONS)
READ MANUAL BEFORE USE



Information for Dry use Vacuum Cleaners

WARNING:

Read the instruction manual before using the machine.
Operators shall be adequately instructed on the use of this machine.
As with all electrical equipment, care and attention must be exercised at all times during use. In addition to ensuring that routine and preventative maintenance is carried out periodically to ensure safe operation.
Failure to carry out maintenance as necessary, including the replacement of parts to the correct standard could render This equipment unsafe and the manufacturer can accept no responsibility in the respect.
Maintenance should only be carried out by a qualified person.
This machine is DRY USE only and must not be stored outside or used in wet conditions.
This machine shall be disconnected from the mains by removing the plug from the supply socket during cleaning or maintenance and when replacing parts or converting the machine to another function.
The machine is not to be used by children or persons with reduced physical, sensory or mental capabilities, or lack of experience or knowledge, unless they have been given supervision or instruction.
This appliance is intended to be cleaned and maintained by an adult.
Children being supervised are not to play with the machine.
This machine is not a toy.

CAUTION:

This machine is not suitable for picking up hazardous or explosive dust - Contact your local distributor if you require a machine capable of performing these tasks.
Ensure that the filtration system fitted to the machine is suitable for the material being collected.
This vacuum cleaner is intended for indoor use in the collection of dry materials.
This machine should be stored indoors only.

NOTE:

This machine is also suitable for commercial dry use, for example in hotels, schools, hospitals, factories, shops and offices for other than normal housekeeping purposes.
If the vacuum cleaner has a blockage, switch off, remove the plug from the wall, inspect the floor tool, tubes and hose for debris. If the floor tool, tubes and hose are clear, replace the dust bag and clean the filter.
The vacuum cleaner should be inspected after use for damage.
Not suitable for the collection of biological hazards, hazardous, or explosive dusts.
The vacuum cleaner should be stored in a dry place.

DO:

The mains lead should be fully unwound before use.
Keep your machine clean including hoses and tubes.
Change dust bag frequently.
Keep filters clean.
Keep diffuser filter [where fitted] clean.
Use filter bags, they will enhance performance and help keep machine clean.
Use a Original filter bag under fine dust conditions from your distributor.
Keep hoses and tubes clear.
Replace any worn or damaged parts immediately.
Only use the socket outlet on the machine for purposes specified in the instructions.
Only use the brushes provided with the machine. The use of other brushes may impair safety.
This cable can be replaced by the user when the machine is equipped with a detachable cable and the original cable is supplied to the user. In other cases a qualified person should replace the cable.
Only replace the power cord with the correct approved replacement part by your distributor.

DON'T:

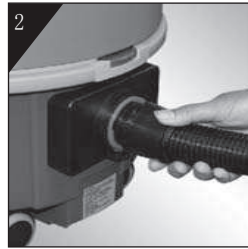
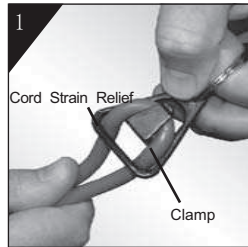
Unreel the cable with one pull or pull on the cable to unplug the machine from the power supply.
Use to suck up hot ashes or lighted cigarette ends.
Use steam cleaners or pressure washers to clean the machine or use in the rain.
Immerse in water for cleaning.
Attempt machine maintenance or cleaning unless the power supply plug has been removed from the supply outlet.
Do not use in wet environments or to collect wet materials.

Assembly

1. Ensure the power cord is resting in the cord strain relief.

Should the power cord come loose from the cord strain relief reattach it to preserve the life of the power cord. To reattach the cord strain relief, grasp the power cord 4 - 5 inches from the unit. Pinch power cord together and slide approximately 1 - 2 inches through hole in cord strain relief. Carefully slide power cord over clamp and pull excess until the power cord is seated under clamp (fig 1).

2. Insert the hose into the intake and turn clockwise to lock hose in place (fig 2)



Using the Extension Wand & Accessory Tools

Extension Wand: Insert the nozzle firmly into the large end of the extension wand. To extend the wand, push the button on the wand forward and pull the extension out to the desired length (fig 5).

Accessory Tools: The accessory tools can be used either with or without the extension wand. To attach an accessory tool with the extension wand, firmly slide the small end of the extension wand directly into the desired accessory tool. To attach an accessory tool without the extension wand, firmly slide the nozzle directly into the desired accessory tool.



For Easy Power Cord Storage

In order to extend the life of the power cord and prevent fracture, grasp the cord close to the unit and roll the cord from the machine outwards. When finished, hang the power cord on the cord hooks (fig 6).



Wizzo Instruction

This machine is installed with a warning signal system called Wizzo. This valve opens the under pressure gets too high into the can; it can be caused by a blocked hose, full paper bag or dirty filter.

The wave open, gives cooling air to the motor but also give a warning signal sound, this means that your vacuum is not operating as it should switch of the unit and then inspect the airflow circuit, (floor tool, hose, paper bag and filter).



Operating Recommendations

1. When inserting a new disposable paper bag, first fold out the bag and then install it into the yellow holder and OPEN THE BAG.
2. When the disposable filter dust bag is full, REPLACE IT.
3. If at any time the unit does not pick up properly or makes an unusual noise, STOP OPERATION and service.
4. Although your vacuum will pick up pins, paper clips, and other small objects, it is recommended that these be removed from the floor before you vacuum. Failure to do so may result in permanent damage to the unit.
5. **WARNING:** Do not use your vacuum cleaner on damp or wet surfaces. This will cause damage to the vacuum cleaner and is dangerous to the user. Damage caused by use on wet or damp surfaces is not covered under warranty.
6. Change the disposable filter dust bag at least once a month—even if it is not full! The collected dust in the dust bag can cause odor, attract moisture, and can affect the efficiency of the cleaner.
7. **DO NOT** run the vacuum cleaner over the cord.
8. **Use caution when vacuuming over area rug edges & fringe.**

General Information

The performance of your new vacuum cleaner greatly depends upon care and maintenance. The instructions in this manual will guide you in performing basic care and maintenance. To obtain the most satisfying years of service read the instructions and keep them handy for future reference.

Disposable Paper Filter Dust bags

Disposable paper filter dust bags play a very important role in the efficiency of your **Fast** vacuum cleaner. The purpose of the filter bag is to trap dirt, but at the same time it must be porous enough to allow air to pass through. If the filter bag becomes clogged, no air can pass through the cleaner and cleaning cannot take place, regardless of the cleaner's power.

To keep your cleaner operating at maximum efficiency, change the dust bag frequently.

Be sure the disposable paper filter dust bag is installed properly.

All paper dust bags are not the same, Your **Fast** disposable dust bags have been designed to be used with the **Fast** cleaner. Using bags other than genuine **Fast** disposable bags will affect the cleaning ability of your cleaner and could cause damage to it.

General Cleaner Care

At least once a month, check the disposable exhaust filter and motor filter for clogs. If the filters become clogged, no air can pass through the cleaner and cleaning cannot take place, regardless of the cleaner's power. See "Replacing the Exhaust Filter" and "Replace and Cleaning the Motor Filter".

Also wipe the outside of the cleaner with a damp cloth. A little preventative maintenance will keep your cleaner looking new and will ensure continued cleaning effectiveness.

Overheating

The temperature of the suction motor is measured constantly. If the temperature becomes too high, the sensor will switch off the suction motor. Check whether the suction system is blocked. The sensor will be automatically switched on again after the sensor and the motor have cooled down sufficiently. You can now start to use the machine again.

Replacing the Exhaust Filter

WARNING: Unplug cord from electrical outlet before servicing.

1. Remove and dispose exhaust filter cartridge from vacuum cleaner (fig 7)
2. Slide new exhaust filter cartridge in vacuum cleaner.



Replacing and Cleaning the Motor Filter

WARNING: Unplug cord from electrical outlet before servicing.

Compacto 6 model: Slide the cartridge filter from the housing the extended side of the filter has to be pointed to the back where the opening and closing clip is to install the new filter. Push it over the motor unit until it is completely down. (This is for lifetime filter)



Troubleshooting Guide

WARNING: Unplug cord from electrical outlet before servicing.

Problem	Possible Source	Areas To Check
Vacuum motor is off	Not plugged in properly. No electricity in wall outlet. Switch in "off" position. Sensor temperature too high.	Be sure plug is firmly plugged into wall outlet. Check electrical source (fuse or circuit breaker). Position switch to "on" position. Check for air obstruction. Let the motor cool down.
Low suction	Dust bag full. Hose not installed properly	Replace dust bag. See "Removing and Replacing Dust Bag". Re-install hose.

ALL OTHER SERVICING SHOULD BE DONE BY AN FAST AUTHORIZED SERVICE CENTER.

Whenever calling, please be sure to have your model and serial number from data plate.

WARNING
READ ALL INSTRUCTIONS BEFORE USING THIS VACUUM CLEANER
To reduce the risk of fire, electric shock, or injury:
For Dry Vacuum Only

Operating Instructions

Make sure disposable paper filter dust bag is in place. Don't operate the cleaner without a paper filter dust bag. Plug the power cord into an electrical outlet and press the "On" switch located on top of the unit.

High-Low Switch

This machine is equipped with a normal mode/quiet use switch. You can use it to control the speed of the suction motor.

SWITCH	SPEED	ACTION
Quiet Mode	Quiet Mode	Noise Reduction Suction Reduction
Normal Use	Normal	Noise Increase Suction

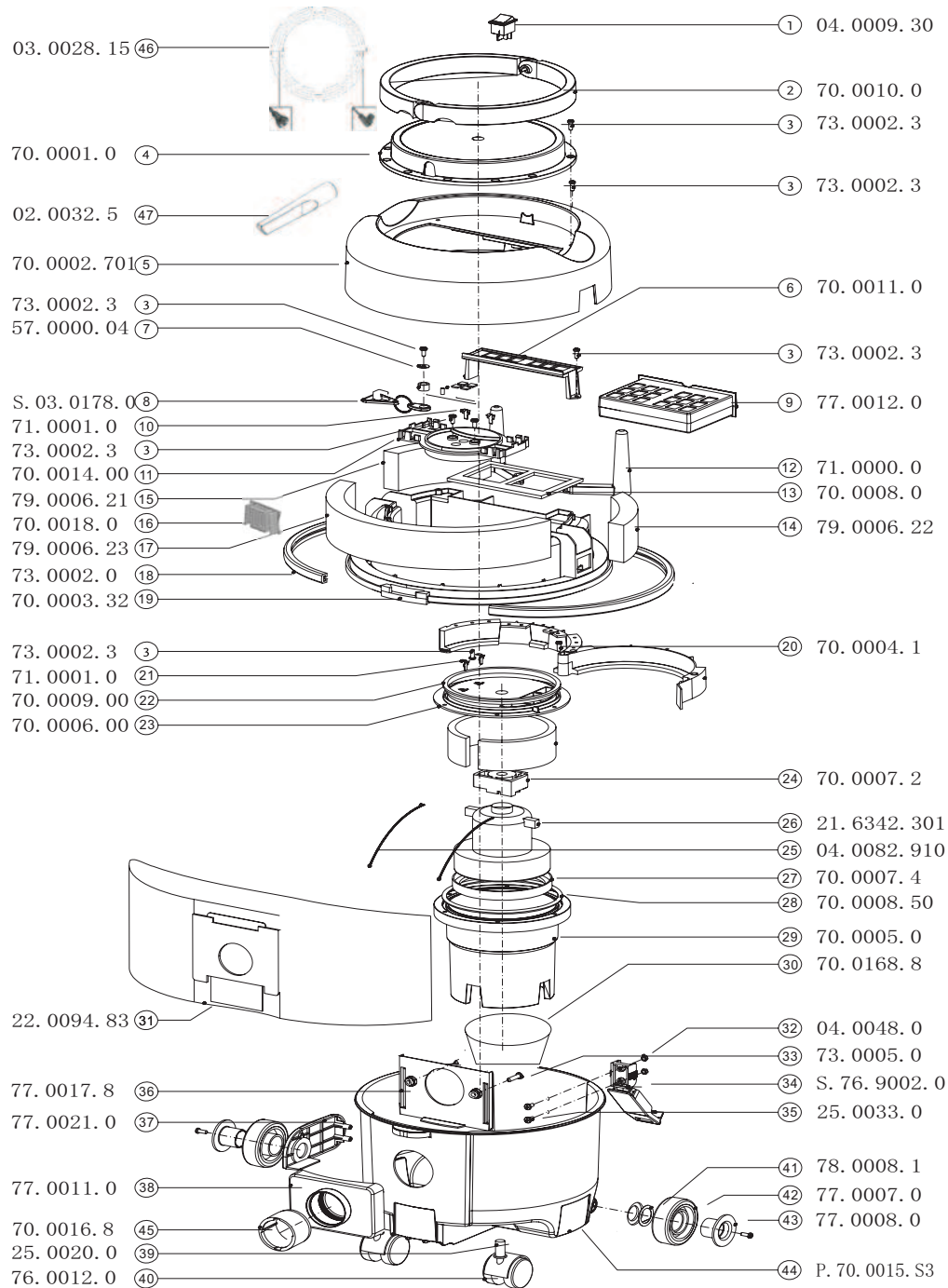
Removing & Replacing the Disposable Dust Filter Bag

1. Release latch on the side of the unit and remove the top cover (fig 3).
2. Remove hose from intake. Fold ends of filter bag together and pull cardboard tag to automatically close the bag (fig 2)



3. Insert a new filter bag by sliding the cardboard collar into the slots located on the dock until bag is fully inserted.
4. Replace hose and top cover and fasten latch. (fig 2).

EXPLODED VIEWS



EXPLODED VIEWS' ITEMS

NO.	ART CODE	DESCRIPTION	REF.	QTY.
1	04.0009.30	SWITCH 4P GREEN	66	1
2	70.0010.0	HANDLEGRIP BLACK C6	401	2
3	73.0002.3	SCREW 5x16	404	14
4	70.0001.0	DISPLAYCOVER BLACK C6	402	1
5	70.0002.701	COVER C6 BLUE	405	1
6	70.0011.0	FILTERFIX BRACKET C6 MAL17	420	1
7	57.0000.04	WASHER PLAIN M5	441	3
8	S.03.0178.0	CABLE RESTRAIN	S196	1
9	77.0012.0	CASSETTE FILTER C06/9 BLACK	413	1
10	71.0001.0	CONTACT FOR PLATE C06 N/R	407	2
11	70.0014.00	PCB FIXPLATE C6 MAL 27	415	1
12	71.0000.0	CABLE CLAMP BLACK	419	2
13	70.0008.0	FILTER RUBBER	417	1
14	79.0006.22	FOAM SIDE FORM 6(B)	409	1
15	79.0006.21	FOAM SIDE FORM 6(A)	418	1
16	70.0018.0	FRAME FRAGRANCE CASSETTE BLACK		1
17	79.0006.23	FOAM SIDE FORM	416	1
18	73.0002.32	PVC BUMPER C9/6 GREY	422	1
19	70.0003.32	COVERPLATE GREY C6	408	1
20	70.0004.1	MOTOR FIXING RING C06 MAL7	412	1
21	71.0001.0	CONTACTPLATE	407	2
22	70.0009.00	MOTOR RUBBER	439	1
23	70.0006.00	MOTOR COVER NEUTRAL 15%GF	410	1
24	70.0007.2	MOTOR SUSPEND RUBBER	414	1
25	04.0082.910	WIRE BL 1MM2 200MM PL/PL4.8 INSULATION CSA	447	2
26	21.6342.302	MOTOR D1 850W230V VPD AMETEK	394	1
27	70.0007.4	BOTTOM RUBBER C6 TK/AMETEK MOT	421	1
28	70.0008.50	MOTOR CAN CORD 5,5MM ROUND	439	1
29	70.0005.0	MOTORCANCMP BLACK C6 MAL2	424	1
30	70.0168.00	CARTRIDGE FILTER C06 BLACK	403	1
31	22.0094.86	PAPER BAG S/F NILFISK UZ934	301	1
32	04.0048.0	NUT M5 NYLON	179	2
33	73.0005.0	SCREW PT WN1412KB60X25 COMP.	331	2
34	S.76.9002.0	CLIP NYLON ASSY	S389	1
35	25.0033.0	SCREW COUNTERSUNK M5 X 12	406	2
36	77.0017.8	PAPER BAG HOLDER YELLOW FOR UZ934	330	1
37	77.0021.0	STORAGE CLIP LEFT C06/9 BLACK	439	1
38	77.0011.0	CAN CONNECT. COMPAC BLACK C9/6	327	1
39	25.0020.0	SOCKETS DOUBLE CASTOR	443	2
40	76.0012.0	CASTOR DOUBLE 50MM RUBBER/B/NY	322	2
41	78.0008.1	SHIMRING 0 26 C9/6	430	2
42	77.0007.0	REARCASTOR GR. NON MARKING C9/6	426	2
43	77.0008.0	REARCASTOR BEARING BLACK C9/6	427	2
44	P.70.0015.S3	CAN ASSEMBLY C06 GREY	S498	1
45	70.0016.8	INSERT DUPRO YELLOW	329	1
46	03.0028.15	CABLE EUR 2P/1-RED-15MTR-A.C.	175	1
47	02.0032.5	CREVICE TOOL 32MM	174	1

FREQUENTLY USED PARTS

NO.	ART CODE	DESCRIPTION	REF.	QTY.
1	K.10.22.0094.83	KIT PAPER BAG S/F NILFISK UZ934 [10 PIECES]	301	10
2	K.100.22.0094.83	KIT PAPER BAG S/F NILFISK UZ934 [100PIECES]	301	100
3	K.1.02.0032.5	KIT CREVICE TOOL 32MM [1 PIECE]	174	1
4	K.1.S.02.0040.5/1	KIT PLUMEAU ROUND 32MM NATURAL HAIR + BRITAL [1 PIECE]	185	1
5	K.1.02.0001.8S10/0X1	KIT TELESCOPIC WAND 32MM 630MM S/S BLCAK KNOB [1PIECE]	104	1
6	K.1.77.0012.0	KIT FILTER CASSETTE C06/9 BLACK [1PIECE]	S495	1
7	K.1.70.0168.00	KIT CARTRIDGE FILTER C06 BLACK [1 PIECE]	403	1
8	K.1.21.6342.302	KIT MOTOR D1 850W 230V VPD AMETEK [1 PIECE]	S394	1



GB

EC Declaration of Conformity

We,

Vacuum Cleaner Production (VCP) B.V.
Hoppenkuil 27a
5626DD Dindhoven
The Netherlands

Hereby declare the following equipment

Product: **Vacuum Cleaner**
Model: **Hi-Filtration 6.0**
Rating: **220-240V 50Hz**
1100W
Class II
IPX0

fulfills all the relevant provisions of European Low Voltage Directive 2006/95/EC and EMC Directive 2004/108/EC. This equipment has been designed and manufactured in accordance with following harmonized European standards:

EN 60335-1:2002+A11:2004+A1:2004+A12:2006+A2:2006+ A13:2008
EN 60335-2-2:2003+A1:2004+A2:2006
EN 60335-2-69:2009

EN 62233:2008

EN55014-1:2006+A1:2009
EN61000-3-2:2006+A1:2009+A2:2009
EN61000-3-3: 2008
EN55014-2:1997+A1:2001+A2:2008



Signature:

2010/9/11

DE

EC Konformitätserklärung

Vacuum Cleaner Production (VCP) B.V.
Hoppenkuil 27a
5626DD Dindhoven
The Netherlands

Wir erklären hiermit, dass nachstehende Geräte die Ausföhrungen folgender Richtlinien erfüllen:

Product: **Vacuum Cleaner**
Model: **Hi-Filtration 6.0**
Rating: **220-240V 50Hz**
1100W
Class II
IPX0

Die Geräte wurden gemäß folgender harmonisierter europäischer Normen entwickelt und hergestellt:

EN 60335-1:2002+A11:2004+A1:2004+A12:2006+A2:2006+ A13:2008
EN 60335-2-2:2003+A1:2004+A2:2006
EN 60335-2-69:2009

EN 62233:2008

EN55014-1:2006+A1:2009
EN61000-3-2:2006+A1:2009+A2:2009
EN61000-3-3: 2008
EN55014-2:1997+A1:2001+A2:2008



Signature:

2010/9/11

FR

Déclaration de conformité CE

Vacuum Cleaner Production (VCP) B.V.
Hoppenkuil 27a
5626DD Dindhoven
The Netherlands

Nous soussignes déclarons que l'équipement ci-dessous satisfait aux dispositions suivantes:

Product: **Vacuum Cleaner**
Model: **Hi-Filtration 6.0**
Rating: **220-240V 50Hz**
1100W
Class II
IPX0

Die Geräte wurden gemäß folgender harmonisierter europäischer Normen entwickelt und hergestellt:

EN 60335-1:2002+A11:2004+A1:2004+A12:2006+A2:2006+ A13:2008
EN 60335-2-2:2003+A1:2004+A2:2006
EN 60335-2-69:2009

EN 62233:2008

EN55014-1:2006+A1:2009
EN61000-3-2:2006+A1:2009+A2:2009
EN61000-3-3: 2008
EN55014-2:1997+A1:2001+A2:2008



Signature:

2010/9/11

NL

EC-Verklaring Van overeenstemming

Vacuum Cleaner Production (VCP) B.V.
Hoppenkuil 27a
5626DD Dindhoven
The Netherlands

Wij verklaren hierbij dat de volgende producten zijn ontwikkeld en geproduceerd in overeenstemming met de volgende normen en voorschriften:

Product: **Vacuum Cleaner**
Model: **Hi-Filtration 6.0**
Rating: **220-240V 50Hz**
1100W
Class II
IPX0

Deze producten zijn ontworpen en geproduceerd in overstemming met de volgende Europese standaarden:

EN 60335-1:2002+A11:2004+A1:2004+A12:2006+A2:2006+ A13:2008
EN 60335-2-2:2003+A1:2004+A2:2006
EN 60335-2-69:2009

EN 62233:2008

EN55014-1:2006+A1:2009
EN61000-3-2:2006+A1:2009+A2:2009
EN61000-3-3: 2008
EN55014-2:1997+A1:2001+A2:2008



Signature:

2010/9/11