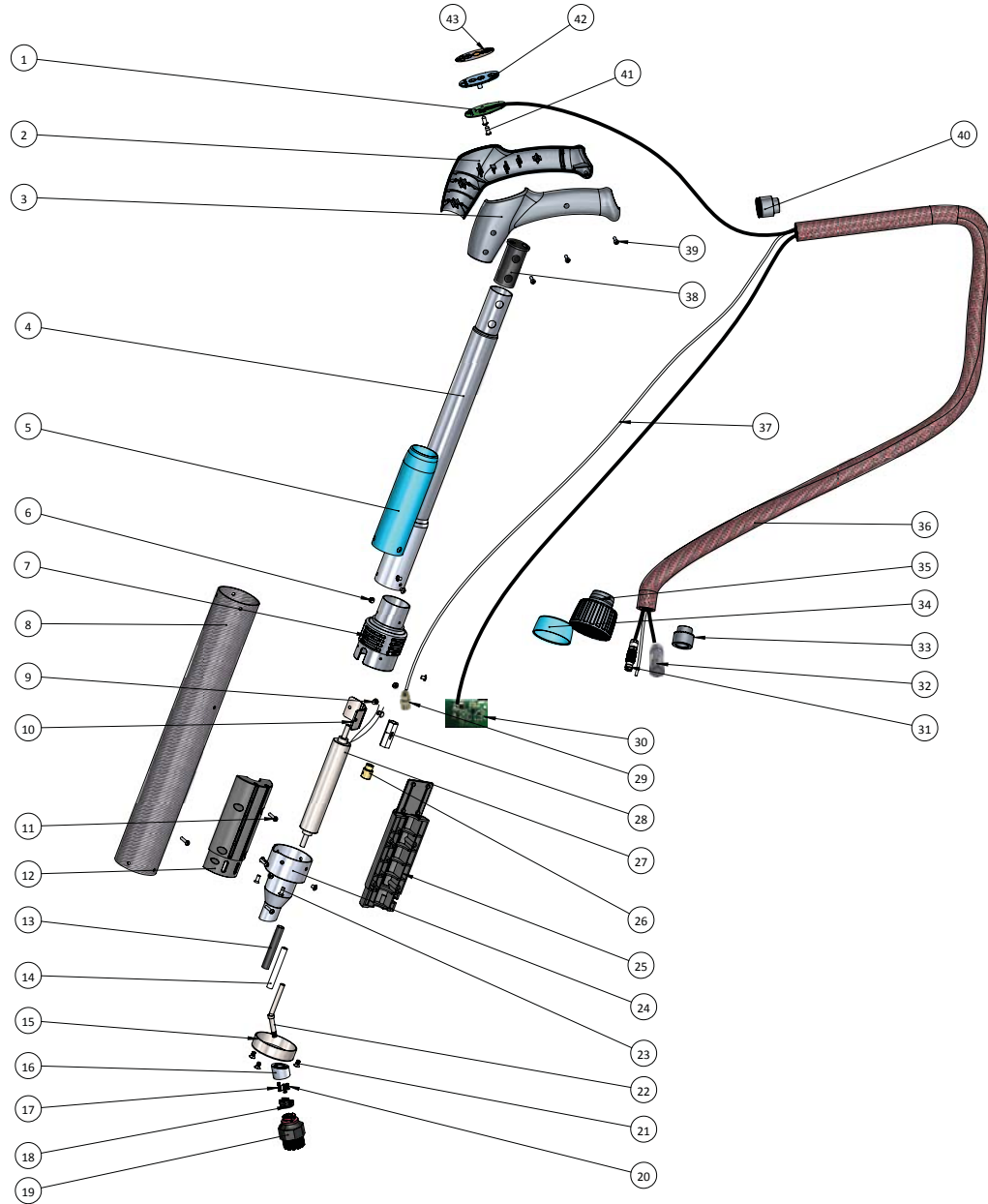


Revision	Description	Revised	Date



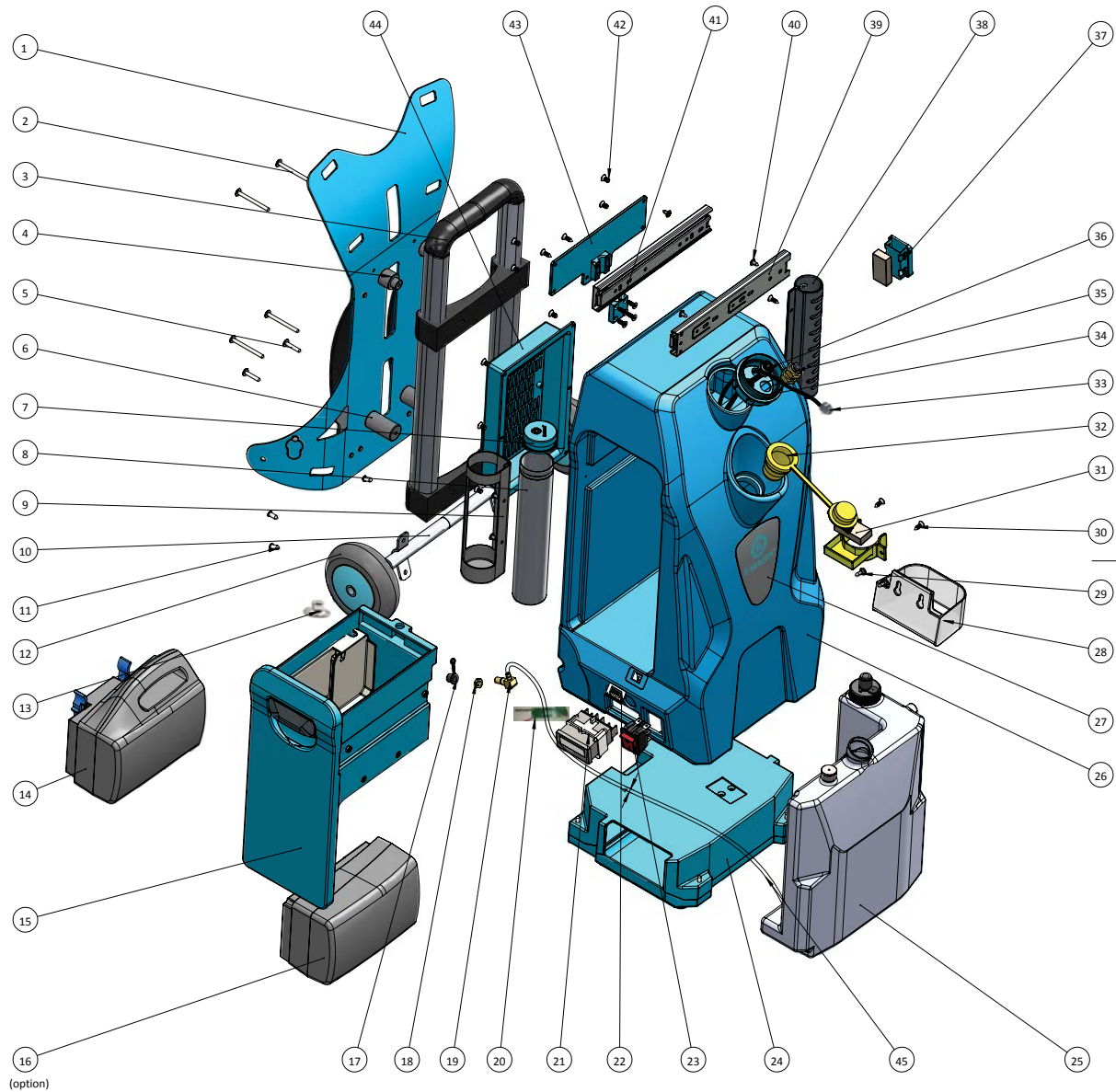
Item	Part No.	Discription	Material	Q'ty
1	106.0002.8	Control Panle PCB Battery Version	PCB	1
2	97.2004.31_remark	Handle cover right, Gray 431C,	PA66+20%GF	1
3	97.2003.31_remark	Handle cover left, Gray 431C	PA66+20%GF	1
4	106.0002.2	Handle Wand	AL	1
5	106.1151.0	Soft Rubber For Lance Handle	Rubber	1
6	106.1111.5	M4*6 Hex-socket Botton Head Screw	SUS 304	1
7	106.1002.1	Lance AL Top Cap	AL	1
8	106.2000.3	Lance carbon fibre sleeve	Carbon Fibre	1
9	02.0005.1	Sealed rivet Alu 4*8mm	AL	2
10	106.2149.0	Steell part for lance top magnet	SUS 201	1
11	106.1111.23	M4*16 PAN HEAD SELF-TAPPING SCREW	SUS 304	4
12	106.2173.0	Top fitting housing for heater	ABS, UL94-V0	1
13	106.2191.0	RSFR-H TUBE \varnothing 9*62MM		1
14	106.2190.0	Silicon tube \varnothing 8* \varnothing 5*60mm	Silicon rubber	1
15	106.0005.9	Bottom steel ring for lance	SUS 403	1
16	106.0005.8	Brush holder	AL	1
17	106.1111.19	M3*12 Flat head machining screw	SUS 304	2
18	106.2171.0	Rubber for brush holder	Rubber	1
19	106.0013.1	Brush with nylon bristle, 1.0mm outlet hole	PA66+20%GF	1
(19)	106.0014.1	Brush with steel bristle, 1.0mm outlet hole	PA66+20%GF	1
20	69.0022.1	Screw M3*10	SUS 304	1
21	72.0206.1	Screw Counter sunk bolt M4*8_SS	SUS 304	3
22	106.0205.0	Steel tube for outlet connector	SUS 304	1
23	106.1111.9	M4*8 Flat head machining screw	SUS 304	3
24	106.0005.5	SUP END CAP	AL	1
25	106.2172.0	Top fitting housing for heater	ABS, UL94-V0	1
26	106.2192.0	G1/8 Connector for heater	Cu-h68	1
27	106.2169.0	Fluent in-line heater, DC24V, 250W	SUS 304	1
28	106.2045.2	Retaining Valve	Cu	1
29	106.2193.0	G1/8 Quick connector for retaining valve	Cu	1
30	106.2170.0	PCB board for heater in lance	PCB	1
31	S.106.2046.3	7 poles circle male connector with wires	PVC, Cu	1
32	106.2189.2	Cable for lance heater power supply	PVC, Cu	1
33	106.2105.0	Hose end cap	ABS	1
34	106.2168.0	Support Cap for hose connector	PA66+15%GF	1
35	106.0021.0	Hose connector cap	POM, UL94-V0	1
36	106.0023.0	Protection hose outside \varnothing 25mmx1.5M	PU, steel	1
37	106.0118.0	Transparent pipe for fluid output 6*4mm	PU	2.8M
38	106.1144.0	Rubber stoper for handle	Rubber	1
39	00.0002.62	Screw st3*14 cross	SUS 304	3
40	106.2105.1	Hose end cap for handle	ABS, UL94-V0	1
41	106.1111.4	M3*6 Pan head self-tapping screw	SUS 304	6
42	106.0002.6	Control panel	ABS, UL94-V0	1
43	106.2002.5	Control panle sticker	PC	1

TOLERANCES AND DIMENSIONS <small>(UNLESS OTHERWISE SPECIFIED)</small> 0.5-5mm ±0.05mm 6-30mm ±0.1mm 30-120mm ±0.15mm 120-400mm ±0.2mm 400-1000mm ±0.25mm ANGLES ±10° HOLE \varnothing ±0.1mm		MATERIAL: COLOR: TREATMENT:		SMT-EST DONGGUAN 东莞市石碣镇东坑村 Dongguan Smt-est Plastic Moulding Co., Ltd No.88 Xiangshui Road Shijie Town Dongguan City China	
DESIGNED	2017/07/11	REV	001	PART NAME: Battery Lance Exploded Drawing	
DATE	2017/07/11	UNIT	mm	PART NO: S.LAC.IGUMB	
A2		PPR 1/1	SCALE	1:5	PROJECT: BATTERY VERSION I-GUM

1	2	3	4	5	6	7	8
Revision	Description	Revised	Date				

ITEM	PART NO.	DISCRIPTION	MATERIAL	Q'TY
1	S.106.2059.0	Shoulder harness & Waistband Assembly Unit	AL,Clothes	1
2	106.1111.11	M4X45 BIG PAN HEAD MACHINING SCREW	SUS 304	4
3	106.2058.0	Trolley Handel	AL,ABS,PP	1
4	106.2109.0	Screw support bush	POM	2
5	106.1111.13	M4X20 PAN HEAD MACHINING SCREW	SUS 304	2
6	106.2061.0	Support bush for harness	POM	2
7	106.2155.0	Rubber Cap For Brush Storage	Rubber	1
8	106.2150.0	Brush Storage Tube	AL	1
9	106.2156.0	Brush holder bracket	ABS	1
10	106.2008.0	Wheel Shaft	AL	1
11	106.1111.14	M5X10 BIG PAN HEAD SELF-TAPPING SCREW	SUS 304	4
12	45.0014.0	Wheel 100*32 MM	Nylon, PVC	2
13	45.0021.0	Shaft end cap D=10mm	SUS 304	2
14	S.72.0074.357BSRA	Assy Battery pack grey(left) BMS 14AH(FR)(W/O FUSE)	Li-ion Battery	1
15	S.106.2003.1	Drawer for batteries storage Assembly unit	PE, PC/ABS...	1
(16)	S.72.0079.357BSRA	Assy Battery pack grey(right) BMS 14AH(FR)(W/O FUSE)	Li-ion Battery	(1)
17	106.2154.0	Rubber Block For fluid outlet	Rubber	1
18	106.2175.0	FLUID OUTFALL CONNECTOR	Cu	1
19	106.2174.0	Fluid outfall connector	Cu	1
20	106.2100.1	LED Light PCB For Battery Power	PCB board	1
21	106.2071.0	Timer		1
22	106.2101.0	Sticker for battery power	PC	1
23	106.2194.0	MAIN SWITCH 4 P/16A 250V		1
24	S.106.2006.0	Bottom Housing parts assm (see exploded drawing)	ABS, UL94-V0	1
25	S.106.2025.0	ASSY WATER TANK(see exploded drawing)	PP	1
26	106.2001.1	I-GUM Body battery version	PE	1
27	106.0139.1	logo sticker with printing "I-GUM"	PC	1
28	106.2165.0	Water drop disk	PC	1
29	106.2183.0	Hank screw for water drop disk	SUS 304	1
30	106.1111.1	M4*12 Flat hex-socket botton screw	SUS 304	10
31	72.0051.0	Magnet 40*20*10mm	Magnetic	3
32	106.2050.0	Fluid Input Connector With Cap	Silicon Rubber	1
33	106.2189.2	CABLE TO PCB OF BODY FOR HEATER POWER SUPPLY	PVC, Cu	1
34	106.2097.0	Insert Cap For Body	PA66+15%GF	1
35	106.2047.0	Fluid Quick Release Connector 6mm	Cu	1
36	S.106.2046.4	7 Poles circle femal connector	PVC, Cu	1
37	106.2161.0	Magnet Box For Lance top	ABS	1
38	106.2108.0	Broom Holder	ABS	1
39	106.2095.0	Slider Guider	Steel	2
40	106.1111.6	M4*8 PWA head self-stapping screw	SUS 304	8
41	106.2102.1	Fitting Cover shorter	ABS, UL94-V0	1
42	72.0206.1	Screw counter sunk bolt M4*8 Stainless steel	SUS 304	10
43	106.2034.0	Back cover of body	ABS, UL94-V0	1
44	106.2269.0	Back housing fro body	ABS, UL94-V0	1
45	106.0118.0	Transparent pipe for fluid output 6*4mm	PU	0.15M

... connect with next page...



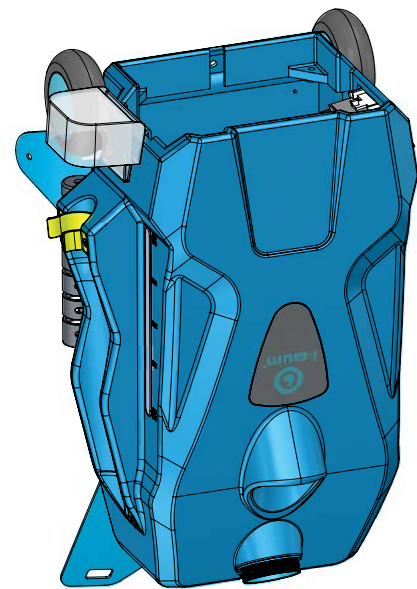
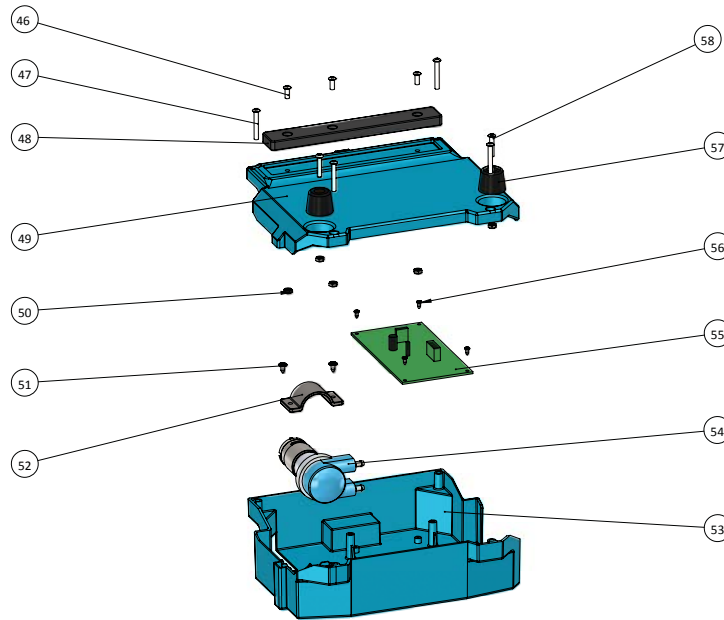
TOLERANCES AND DIMENSIONS (UNLESS OTHERWISE SPECIFIED)		MATERIAL:	
0.5-5mm	±0.05mm	COLOR:	
6-30mm	±0.1mm	TREATMENT:	
30-120mm	±0.15mm	DESIGNED	2017/07/13
120-400mm	±0.2mm	DATE	2017/07/13
400-1000mm	±0.25mm	UNIT	MM
ANGLES	±10°	SCALE	1:1
HOLE Ø	±0.1mm	PROJECT	BATTERY I-GUM

SMT-EST DONGGUAN 东莞市三木塑胶模具有限公司 Dongguan Smit Est Plastic Moulding Co., Ltd 东莞市石碣镇新田村新田路99号 No.99 Xiantong West Road Shitan Town Dongguan City China	
PART NAME	Battery version I-GUM Exploded drawing
PART NO.	S.BOD.IGUM8
REV.	01
PPR	1/2

Revision	Description	Revised	Date

... Connect with first page ...

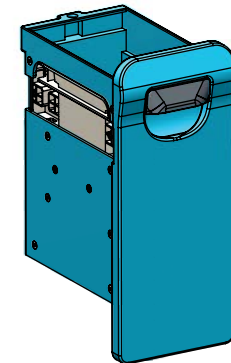
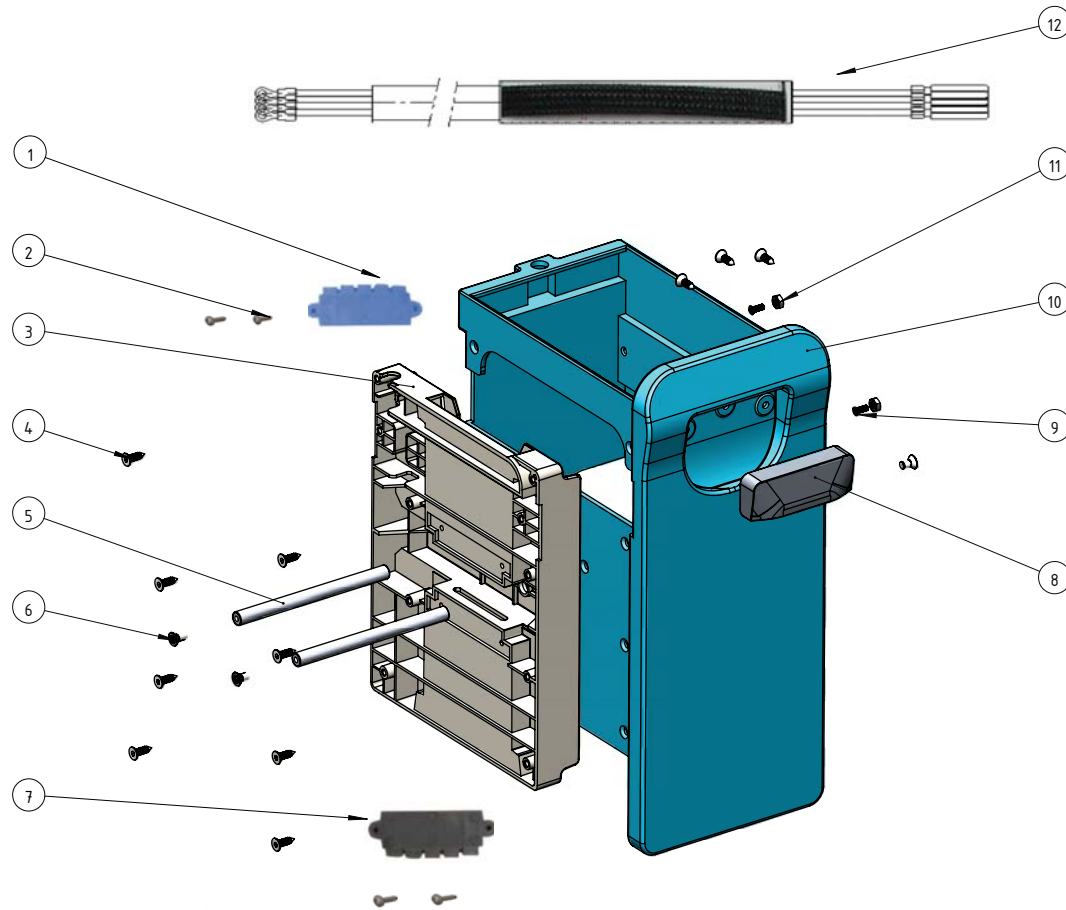
ITEM	PART NO.	DISCRIPTION	MATERIAL	Q'TY
46	106.1111.16	M4*10 Hex-socket botton screw	SUS 304	3
47	106.1111.15	M4*28 Hex-socket botton screw	SUS 304	4
48	106.2153.0	Bottom rubber foot plate	Rubber	1
49	106.2157.0	Bottom cover	ABS, UL94-V0	1
50	72.0261.0	Nut M4 nylon stainless steel	SUS 304	5
51	106.1111.23	M4*16 PAN HEAD SELF-TAPPING SCREW	SUS 304	2
52	106.2106.0	Fitting bracket for pump	ABS, UL94-V0	1
53	106.2006.0	Bottom Housing	ABS, UL94-V0	1
54	106.0130.1	Fluid Pump 10-50ml/DC 24V	XXXX	1
55	106.2070.1	Main PCB board Battery Version	PCB BOARD	1
56	106.1111.4	M3*6 Pan head self-tapping screw	SUS 304	4
57	87.0032.0	Rubber foot	Rubber	2
58	106.1111.12	M4*20 Hex-socket botton screw	SUS 304	2



TOLERANCES AND DIMENSIONS <small>(UNLESS OTHERWISE SPECIFIED)</small> 0.5-6mm ±0.05mm 6-30mm ±0.1mm 30-120mm ±0.15mm 120-400mm ±0.2mm 400-1000mm ±0.25mm ANGLES ±10° HOLE Ø ±0.1mm		MATERIAL: COLOR: TREATMENT:		SMT-EST DONGGUAN 东莞市石碣镇东坑村 Dongguan Smit-EST Plastic Moulding Co., Ltd 东莞市长安镇东坑村 No.88 Xiangling West Road Shitan Town Dongguan City China	
DESIGNED	andy.liu	REV.	01	PART NAME	Battery version I-GUM Exploded drawing
DATE	2017/07/13	UNIT	MM	PART NO.	S.B0D.IGUMB
SCALE	1:4	PROJECT	BATTERY I-GUM		

Revision	Description	Revised	Date

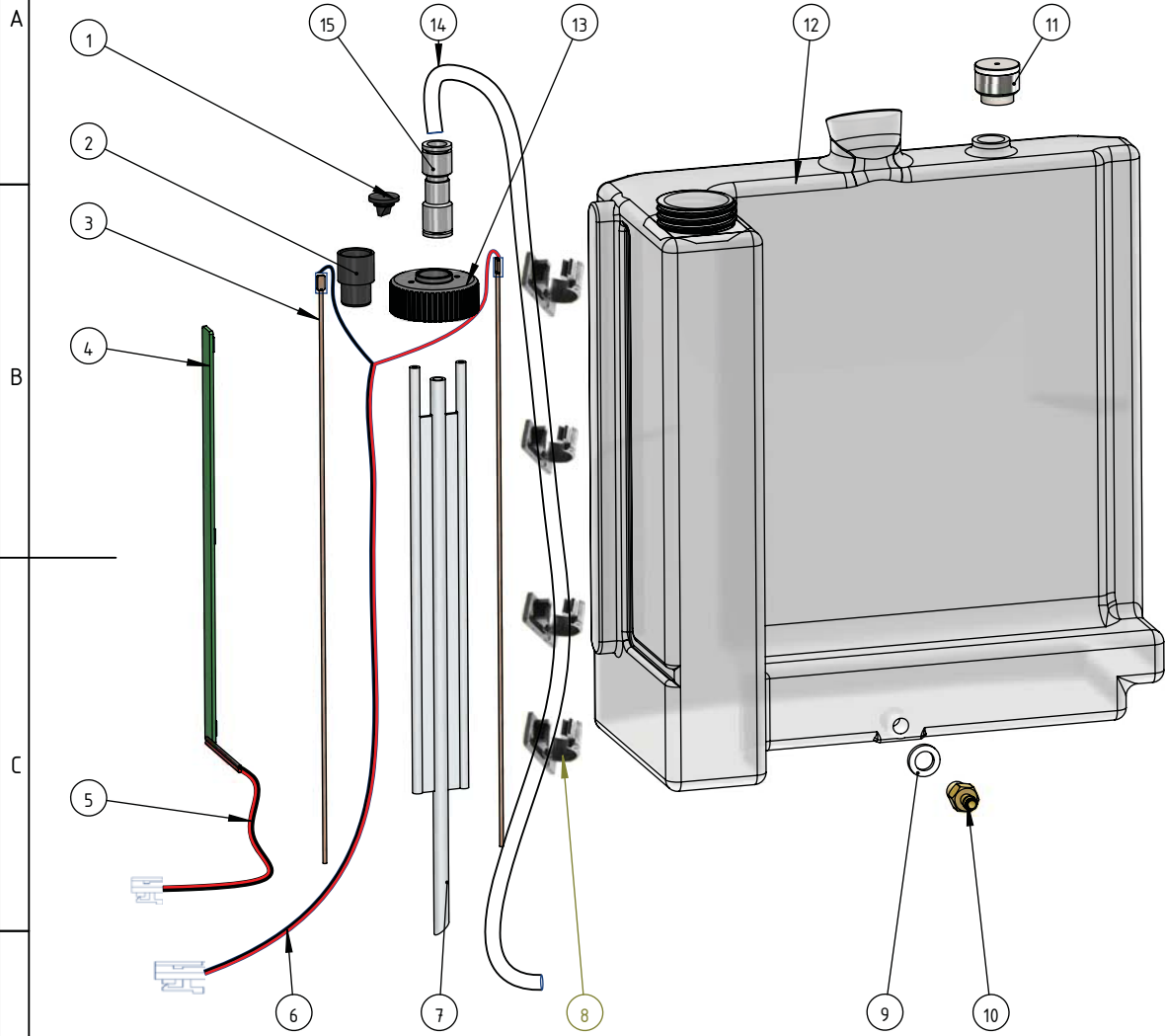
ITEM	PART NO.	DISCRIPTION	MATERIAL	Q'TY
1	72.0068.797	Battery Connector male, Blue	POM	1
2	72.0057.0	Screw wn 5451 2.5*10 Ejoj del TA PT	SUS 304	4
3	106.2167.0	Battery Fitting Housing	PC/ABS, UL94-V0	1
4	106.1111.1	M*12 Flat hex-socket botton scw	SUS 304	1
5	106.2184.0	Al support rod for battery drawer	AL	1
6	72.0206.1	Screw counter suk bolt M4*8 SS	SUS 304	4
7	72.0068.357	Battery connector male, Gray	POM	1
8	106.2004.0	Handle of drawer	ABS	1
9	106.1111.22	M3*8 Flact head machining screw	SUS 304	2
10	106.2003.1	Drawer for batteries storage	PE	1
11	106.1111.21	M3 Flat Nut	SUS 304	2
12	106.2189.0	Cable wire for battery power supply	PVC, Cu, Nylon	1



TOLERANCES AND DIMENSIONS (UNLESS OTHERWISE SPECIFIED)		MATERIAL:		SMT-CST DONGGUAN 东莞诚塑国际模具有限公司 Dongguan Solid-CST Plastic Molding Co., Ltd No.99 Xinfeng West Road Shikou Town,Dongguan City China	
0.5-5mm	±0.05mm	COLOR:		DISGNE	Andy Li
6-30mm	±0.1mm	TREATMENT:		DATE	2017/07/14
30-120mm	±0.15mm			REV.	R01
120-400mm	±0.2mm			UNIT	mm
400-1000mm	±0.25mm			PART NAME	Battery drawer unit exploded drawing
ANGLES	±10°			PART NO	S.106.2003.1
HOLE Ø	±0.1mm			PROJECT	Battery I-GUM

1		2		3	
Revision	Description	Revised	Date		
-	-	-	-		

4		5		6	
ITEM	PART NO	DISCRIPTION	MATERIAL	Q'TY	
1	97.0043.0	Breathing valve	Rubber	1	
2	106.2145.0	Rubber for fluid outlet cap	Rubber	1	
3	106.2166.0	Fluid level sensor pin	Cu	2	
4	106.2185.0	LED light PCB for fluid tank	LED, PCB board	1	
5	106.2079.8	Wire for tank LED light	PVC, Cu	1	
6	106.2079.5	Wire for water detecting connector	PVC, Cu	1	
7	106.2104.0	Hard tube for fluid pump outlet	PC, Silicon Rubber	1	
8	106.2187.1	Wires fixator	Nylon	4	
9	106.2178.0	Silicon Rubber Ring 13*8*3mm	Silicon rubber	1	
10	106.2176.0	Tank water outfall connector	Cu	1	
11	106.2186.0	Air evacuation valve for tank	Cu, Rubber	1	
12	106.2025.0	Water tank	PP, transparent	1	
13	106.0103.0	Fluid outlet cap for pump	ABS	1	
14	106.0118.0	Transparent pipe 6*4mm	PU, transparent	0.5M	
15	106.0148.0	Pipe quick connector	POM	1	



TOLERANCES AND DIMENSIONS (UNLESS OTHERWISE SPECIFIED) 0.5-6mm ±0.05mm 6-30mm ±0.1mm 30-120mm ±0.15mm 120-400mm ±0.2mm 400-1000mm ±0.25mm ANGLES ±1.0° HOLE Ø ±0.1mm	MATERIAL:		SMT-CST DONG GUAN 东莞硕能塑胶模具有限公司 Dongguan Solid-CST Plastic Molding Co., Ltd 东莞市石碣镇新风西路99号 No.99 XinFeng West Road Shile Town DongGuan City China		
	COLOR:				
	TREATMENT: -				
	DISGND	Andy Liu	REV.	R01	PART NAME
DATE	2017/07/14	UNIT	mm	PART NO	S.106.2025.0
		A4	page 1/1	SCALE	1:1
		PROJECT	I-GUM		