

Clemas & Co Ltd

Industrial Cleaning Equipment
Sales - Hire - Service

I-MOP LITE SCRUBBER DRYER PARTS MANUAL



Clemas & Co. Unit 16 Ashchurch Business Centre, Alexandra Way, Tewkesbury,
Gloucestershire, GL20 8NB.

Tel: 01684 850777

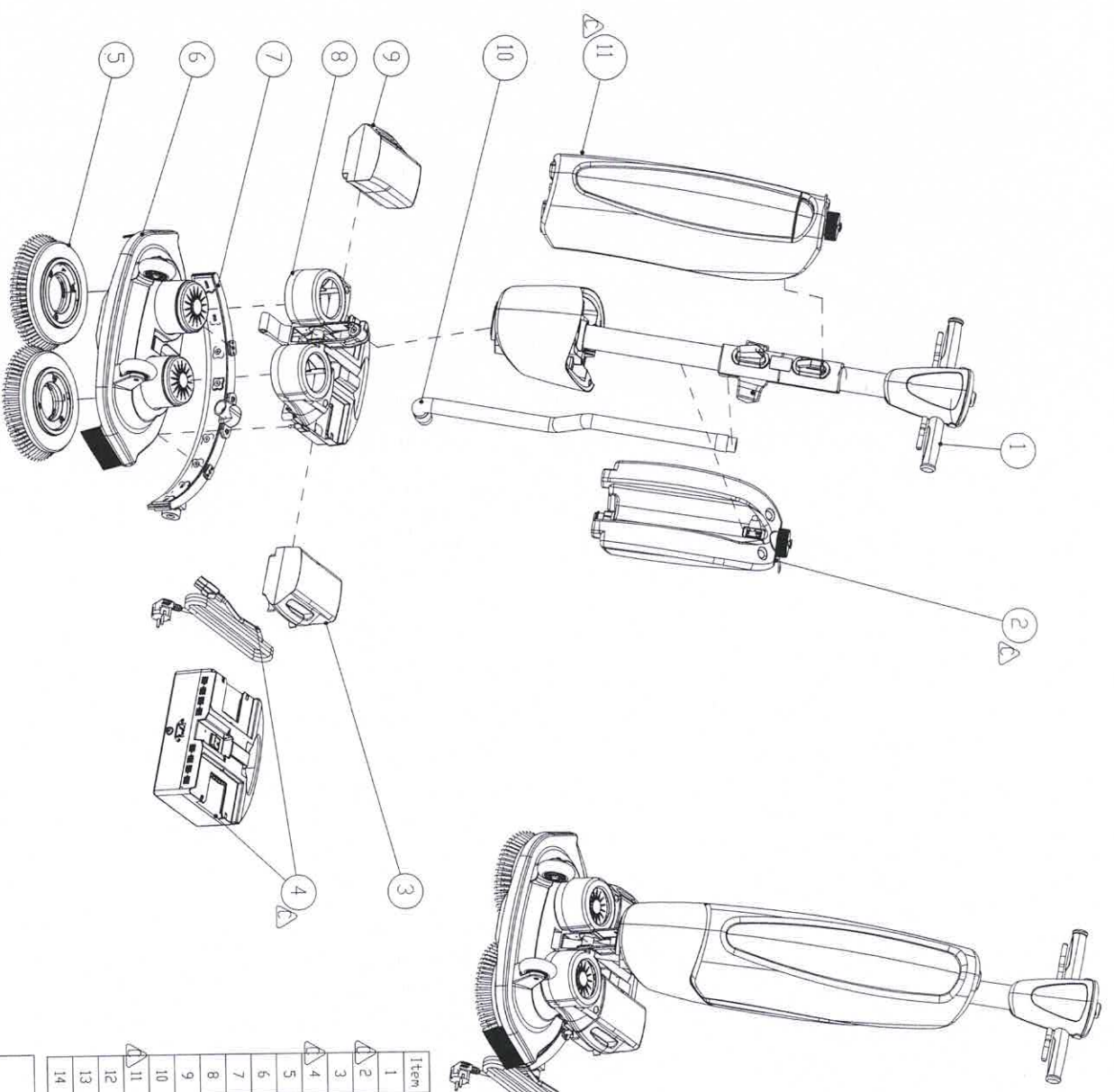
Fax: 01684 850707

Email: info@clemas.co.uk

Web: www.clemas.co.uk

SMT REVISION BLOCK

ISSUE REVISION ZONE CHG BY CHK & DATE DATE APP DATE



Item	P/N	Description	QTY
1	TUIMQP23027797	ASSY TOP UNIT IMQP I BLUE BUTTON	1
2	S72.00811	ASSY CLEAN COMPARTMENT COMPLETE (NEW)	1
3	S72.00742BS	ASSY BATTERY PACK BLUE (LEFT) BMS	1
4	S72.0104.3/TV	IMQP BATTERY CHARGER SWISS WITH TIMER + VOLTAGE DISPLAY	1
5	S72.00927977797	ASS BRUSH IMQP COMPLETE BLUE BRISTLE I BLUE LOCKER	2
6	BUIMQP23036	ASSY BRUSH UNIT IMQP 24V SILVER	1
7	S72.0096.0	SOUJEGEE ASSEMBLY IMQH 1416-1001-10061	1
8	S72.0065.2	ASSY MAIN LEVER UNIT IMQP (MCH 1416-1001-10041	1
9	S72.0079.2BS	ASSY BATTERY PACK GREY (RIGHT) BMS	1
10	S72.0094.0	STRETCH HOSE COMPLETE	1
11	S72.0088.1	DIRT COMPARTMENT (NEW)	1
12	7200422099.00 KIT SHIM	MANUAL IMQP (ENGLISH)	1
13	7200422099.03 KIT SHIM	MANUEL IMQP (ENGLISH)	1
14	NO ORDER NO. SHIM	DAMP-PROOF BAG 30G	2

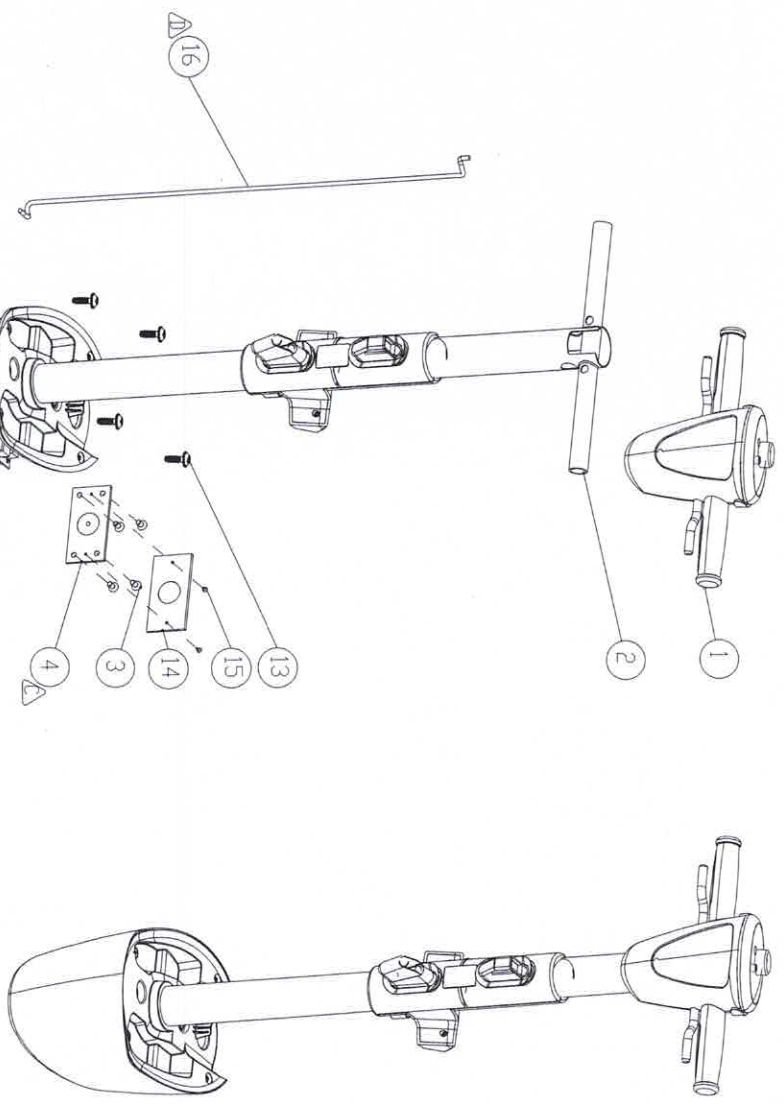
SMT-FCT DongGuan Ltd.
 THE FRIENDLY FAMILY
 ASSEMBLY AND MOLDING OF CLEANING PRODUCTS

TITLE	IMPXL.TLK1200C EXPLODED VIEW	APP NO.	I-MQP	REV.	E
WFL	N/A	APP BY			
CHK BY	ANDY XIE				
SCALE	1/10				
TOLERANCE	N/A				
DATE	N/A				
APP BY					
CHK BY					
DATE					
APP NO.	IMPXL.TLK1200C EXPLODED VIEW				
DATE	IMPXL.TLK1200C				

A3

SMT REVISION BLOCK

ISSUE	REVISION	ZONE	CHG BY	CHK &
			DATE	APP DATE



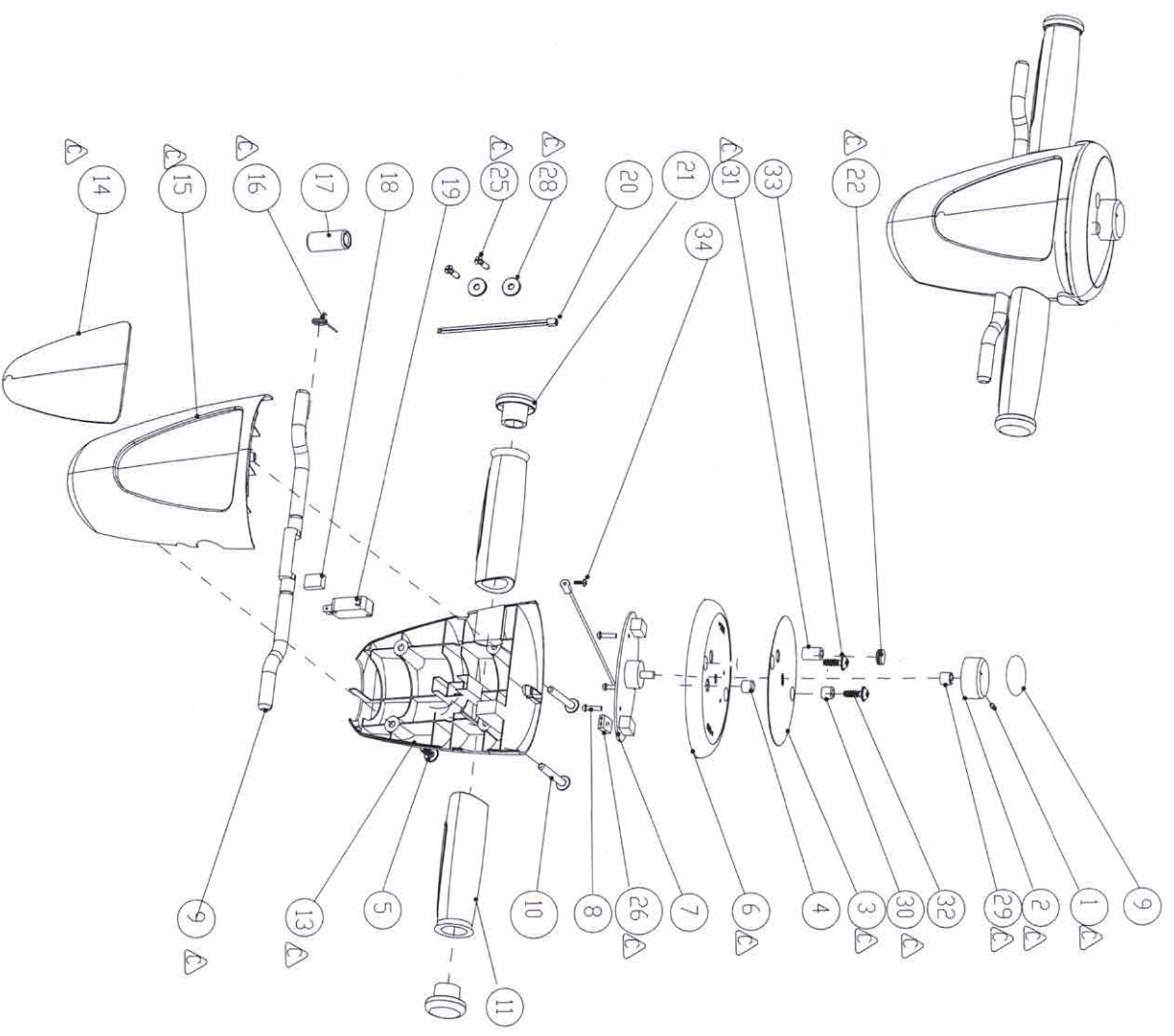
Item	P/N	Description	QTY.
1	TU1MOP.230.2/797	ASSY TOP UNIT 1MOP 1 BLUE BOTTOM	1
2	S/720059.2/797	ASSY CONTROL UNIT 1 BLUE	1
3	S/720040.0	ASSY INLET TUBE (MCH 1416-1001-1024)	1
3	7200331	COUNTER SINK HEAD CAP SCREW M6X12 WITH NYLON GLUE	4
4	S/720031.2	HINGE WELDING ASSY TOP UNIT (Ver2)	1
6	7200340	VACUUM MOTOR SEALING BOTTOM (MCH 1416-1001-2047)	1
7	7200350	DOBEL VACUUM CLEANER MOTOR(6900070)	1
8	7200120	VACUUM MOTOR SEALING SUPPURT (MCH 1416-1001-2048)	1
9	7200137	MOTOR UNIT COVER (MCH 1416-1001-2181), Kieur: Grey .357 (P43)	1
10	7200510	MAGNET TOP UNIT 40X20X10MM (MCH 1416-1001-2044)	1
11	890467.209909 NO. SHDW	STICKER 1MOP (STRONG MAGNETS) (A)	1
12	890467.209902 NO. SHDW	SERIAL NO. VACUUM MOTOR	1
13	7201211	SCREW M6X12	4
14	720241.357	PLASTIC PLATE FOR HINGE WELDING ASSY GREY	1
15	720240.0	COUNT SINK SCREW M3.5X13 PHILIPS HEAD	2
16	7200390/A	UTP CABLE (MULTIPLE WIRES) RJ45 O PH20-8P CONNECTOR L=100CM	1

TITLE				IMPPL.TLK.1200C EXPLODED VIEW				REV.		E	
AUTH.				ANDY XIE				SCALE		1/10	
TOLERANCE				N/A				CHECK BY		2	
DATE				N/A				APP BY		DF	
DRAWN				N/A				SHEET NO.		22	
DATE				N/A				APP BY		A3	

SMT-FCT DongGuan Ltd.
THE FRIENDLY FAMILY
ASSEMBLY AND MOLDING CLEANING PRODUCTS

SMT REVISION BLOCK

ISSUE	REVISION	ZONE	CHG BY	CHK &
			DATE	APP DATE



Item	P/N	Description	QTY.
1	S.72.00592/797	ASSY CONTROL UNIT 1 BLACK	1
2	000115.0	HEXAGON SOCKET SET SCREW M4 X 8	1
3	72.0155.3/797	TURNING BUTTON 1 NODIC OXIDATION MAL 1 BLUE P312C	1
4	89.0467.2099.008	AL STICKER IMP (PLATE) (B)	1
5	72.0203.0	WATER SAVE BUTTON	1
6	72.0121.1	SCREW M4X12, CROSS HEAD, STANDARD THREAD SST	2
7	72.0061.2/A	TOP HOUSING CONTROL UNIT Color: White (A)	1
8	72.0062.0/B	ASSY PCB CONTROL UNIT (B) (BLUE)	1
9	85.1008.1	SCREW M3 X12 CROSSHEAD SELF-TAPPING BL-NI SST	3
10	89.0469.2099.24	REMOVE STICKER ON THE SWITCH	1
11	72.0230.357	SCREW MAX3CROSS HEAD, STANDARD THREAD SST	2
12	72.0122.1	HANDLE GRIP WITHOUT PROTRUSION, Klear: Grey.357 (P431C)	2
13	72.0059.2/A	HANDLE HOUSING CONTROL UNIT (MCH 1416-1001-2624). Klear: White	1
14	72.0063.797	REAR HOUSING CONTROL UNIT (MCH 1416-1001-2655).Klear: Blue 797	1
15	89.0467.2099.018	HANDLE CONTROL UNIT (MCH 1416-1001-2624).Klear: Blue 797	1
16	72.0064.2/A	AL PLATE STICKER IMP (HANDLE)	1
17	72.0228.1	FRONT HOUSING CONTROL UNIT Color: White (A)	1
18	97.0051.0	SPRING_SWITCH LEVER DIA0.8MM (Ver1)	1
19	72.0211.2	MAGNET RING EASY SCRUB	1
20	72.0060.2	RUBBER BLOCK 15x10x5mm INJECTED	1
21	72.0120.0	POWER SWITCH CONTROL UNIT DMOROM	1
22	72.0229.797	DN/OFF SWITCH WIRES / L=250MM	1
23	72.0250.0/A	END CAP GRIP, Klear: Blue 797 (P312C)	2
24	00.0117.0	RUBBER BLOCK WATER SAVE ADJUSTMENT HOLE(A)	1
25	ND SHDW	GLUE ND401	1
26	89.0469.2099.003	STICKER SOFTWARE RELEASE	1
27	72.0057.0	SCREW WN S451 25X10 E JUT DELTA PT (MCH 1416-1001-2150)	2
28	72.0266.0	SWITCH WIRE CLAMP, Klear: Black	1
29	72.0272.0	GLUE 518	0.067
30	72.0271.0	PLASTIC WASHER 9x4x1mm	2
31	72.0276.1	FIXATION INSERT TURNING BUTTON	1
32	72.0276.0	SUPPORT PLASTIC BUSH TOP AL STICKER SHORT	1
33	72.0273.0	SUPPORT PLASTIC BUSH TOP AL STICKER LONG	1
34	72.0273.1	MAX20 COUNTERSUNK SCREW STAINLESS STEEL	1
35	00.0002.7	MAX25 COUNTERSUNK SCREW STAINLESS STEEL	1
	72.0142.14	SCREW 4X10	1
	ND SHDW	IMP WARNING CARD	1

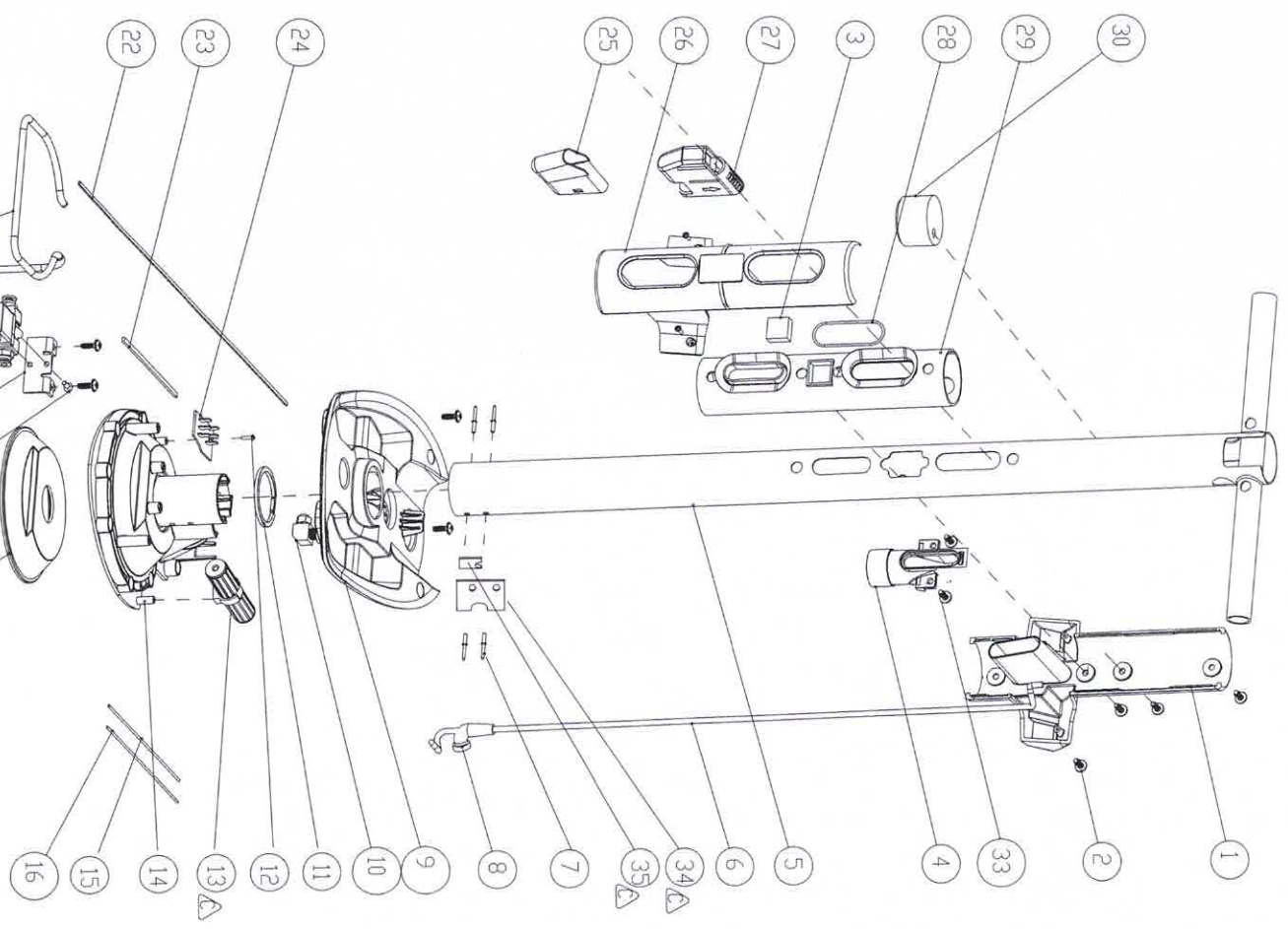
SMT-FCT Dongguan Ltd.

THE FRIENDLY FAMILY ASSEMBLY AND MOLD OF CLEANING PRODUCTS

TITLE	IMPX.LTLK.1200C EXPLODED VIEW	REV.	1-MDP	E
DRAWN BY	ANDY XIE	SCALE	1/10	
CHECKED BY		SHEET	3	DF
DATE		APP BY		22
FILE		IMPX.LTLK.1200C EXPLODED VIEW		A3

SMT REVISION BLOCK

ISSUE	REVISION	ZONE	CHG BY	CHK & APP DATE
-------	----------	------	--------	----------------



Item	P/N	Description	QTY.
1	S.72.0040.0	ASSY INLET TUBE (MCH 1416-1001-1024)	1
2	72.0055.357	TANK HOLDER REAR (MCH 1416-1001-2197), Kleur: Grey .357 (P43)	1
3	72.0026.0	SCREW W/ 5451 50X14 E.JOT DELTA PT (MCH 1416-1001-2004)	10
4	72.0053.0	MAGNET TIP UNIT SMALL 20X20X10MM (MCH 1416-1001-2172)	1
5	72.0056.357	STRETCH HOSE CONNECTOR (MCH 1416-1001-2199), Kleur: Grey .35	1
6	S.72.0041.0	ASSY INLET TUBE WELDING - 1 PIECE (MCH 1416-1001-1025)	1
7	72.0039.0	UTP CABLE (CAT 5) WITH RJ45 ⇔ PH20-8P CONNECTOR L=1000CM	1
8	72.0191.0	RIVET WITH DIA. 5MM & LENGTH 10 MM	4
9	72.0042.0	PUMPER CABLE GUIDING RUBBER (MCH 1416-1001-2187)	1
10	72.0113.357	MOTOR UNIT TOP (MCH 1416-1001-2123), Kleur: Grey .357 (P43)	1
11	72.0049.1	ANGLE METAL CONNECTOR	1
12	72.0044.0	MOTOR UNIT FRAME RUBBER (MCH 1416-1001-2189)	1
13	85.1008.1	SCREW M3 X12 CROSSHEAD SELF-TAPPING BL-NI SST	2
14	S.72.0243.0	ASSEMBLY SIGAR UTP CONNECTOR	1
15	72.0114.357	MOTOR UNIT FRAME (MCH 1416-1001-2122), Kleur: Grey .357 (P4)	1
16	72.0127.0	187 TERMINAL + WIRE 14AWG, RED, L=280mm, 250 TERMINAL	1
17	72.0128.0	187 TERMINAL + WIRE 14AWG, BLACK, L=280mm, 250 TERMINAL	1
18	72.0045.0	VACUUM MOTOR SEALING TIP (MCH 1416-1001-2049)	2
19	72.0206.0	SCREW COUNTER SUNK BOLT 1 MAX10 STAINLESS STEEL	1
20	72.0050.1	MAGNETIC VENTIL FIXATION PLATE STAINLESS STEEL	1
21	72.0026.2	ASSY COPPER MAGNETIC VALVE 2P025-06 WITH METAL CONNECTORS	1
22	72.0209.0	WATER CHANNEL DIA.6MM L=25mm	1
23	72.0165.0	SEALING GASKET EVA 3X15X593MM	1
24	72.0182.0/A	SEALING GASKET EVA 4X25X1510MM	1
25	72.0163.1/996	PCB MAGNETIC VALVE & VAC MOTOR	1
26	72.0054.357	TRANSPARENT PLASTIC DETECTOR DIRTY TANK	1
27	S.72.0189.0	TANK HOLDER FRONT (MCH 1416-1001-2196), Kleur: Grey .357 (P4)	1
28	72.0165.0	ASSY FILTER FOAM CASSETTE 1-MOP	1
29	72.0052.0	O RING WIRE DIA.3MM, OD46MM	1
30	72.0038.0	DIRT COMPARTMENT SEAL (MCH 1416-1001-2081)	1
31	72.0232.0	END CAP INLET TUBE (MCH 1416-1001-2152)	1
32	72.0057.0	THREAD SEALING ADHESIVE	0.02
33	72.0232.0	NO SHOW	1
34	72.0057.0	NO SHOW	1
35	72.0267.0	GLUE ND401	1
	72.0268.0	SEALING PRESSURE PLATE	2
	72.0268.0	SEALING RUBBER SHEET AL TUBE	1

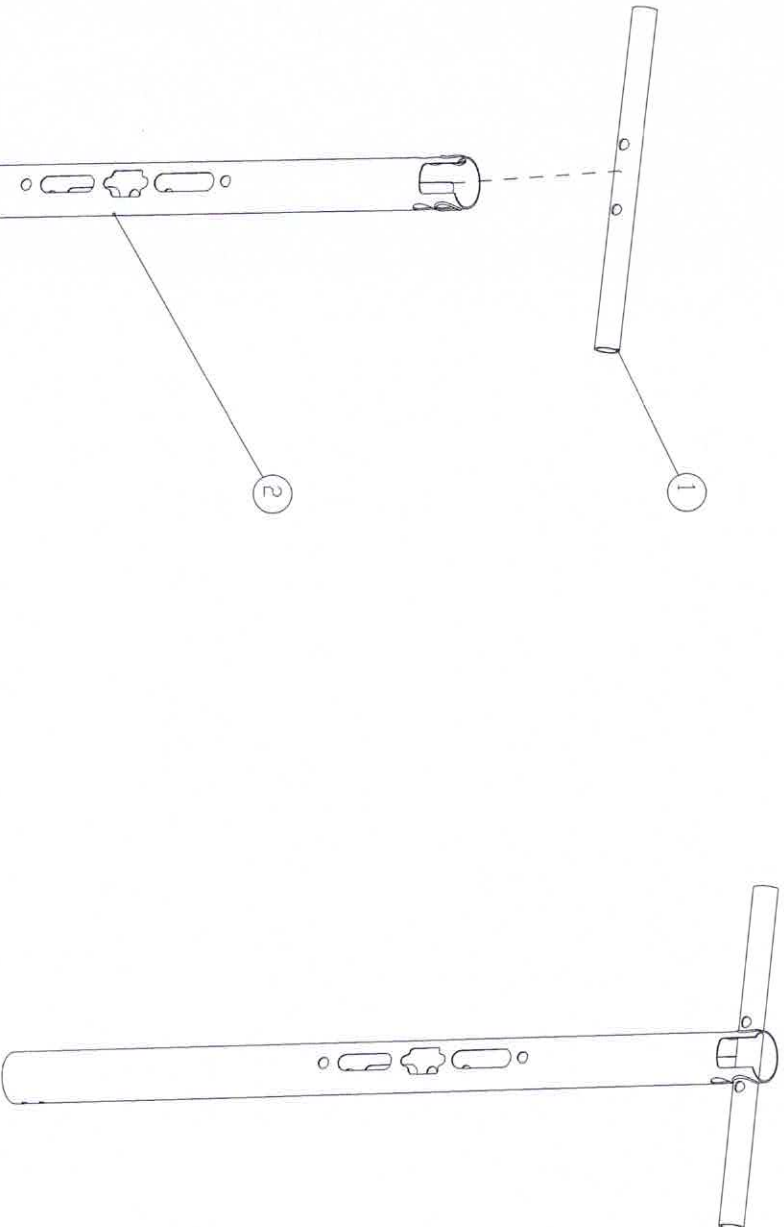
SMT-FCT Dongguan Ltd.

THE FRIENDLY FAMILY
ASSEMBLY AND MOLDING CLEANING PRODUCTS

TITLE	IMPXL.TLK1200C EXPLODED VIEW	SCALE	1/10
DATE	N/A	CHK BY	ANDY XIE
TOLERANCE	N/A	APP BY	
DRW NO.	IMPXL.TLK1200C EXPLODED VIEW	SHEET	4 OF 22
DRW TITLE	IMPXL.TLK1200C	APP DATE	
DRW	N/A	APP BY	

SMT REVISION BLDCK

ISSUE	REVISION	ZONE	CHK BY DATE	CHK & APP DATE
-------	----------	------	----------------	-------------------



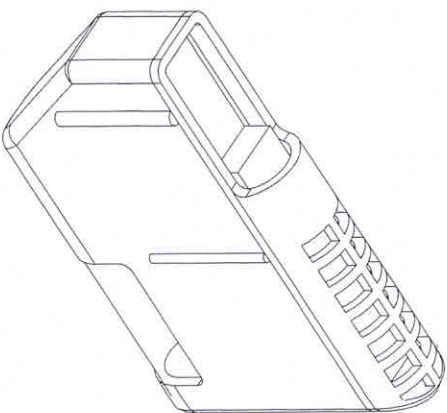
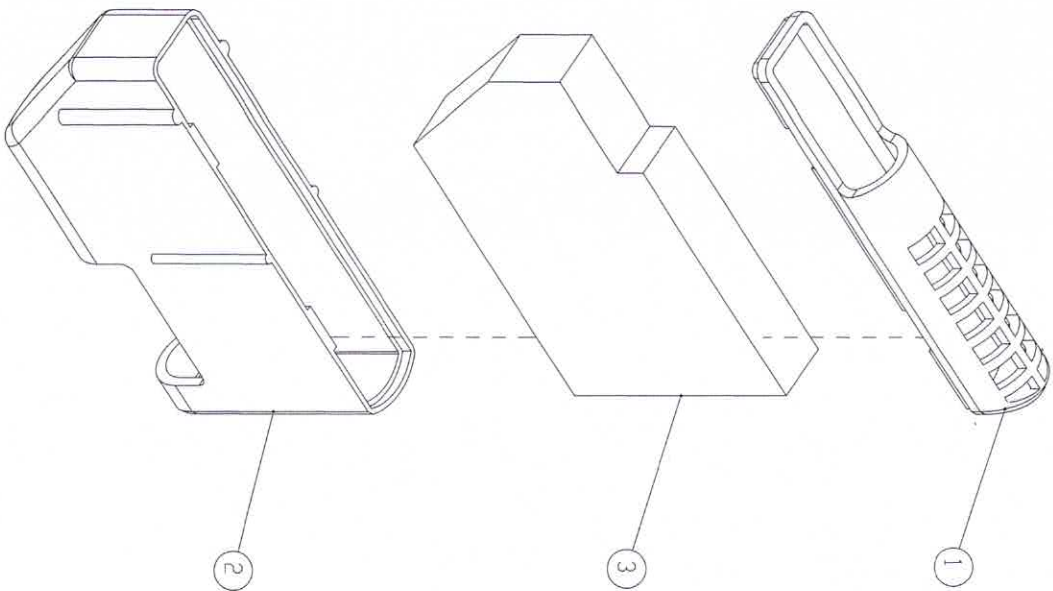
Item	P/N	Description	QTY.
1	S/200410	ASSY INLET TUBE WELDING - 1 PIECE (MCH 1416-1001-1025)	1
2	7200400	INLET TUBE (MCH 1416-1001-2056)	1
	7200410	TUBE CONTROL UNIT-1 (MCH 1416-1001-2063)	1

SMT-FCT DonoGuon Ltd.
 THE FREDERICK L. FARMING PRODUCTS
 ASSEMBLY AND MODEL OF CLEANING PRODUCTS

TITLE	IMPX.L.TLK.1200C EXPLODED VIEW		DATE	1/10
DATE	N/A	CHK BY	ANDY XIE	SCALE
DESIGNED BY	N/A	APP BY		5
CHK BY	N/A	DATE		DF
DATE	N/A	APP BY		22
DATE	N/A	APP BY		A3

SMT REVISION BLOCK

ISSUE	REVISION	ZONE	CHK BY DATE	CHK & APP DATE
-------	----------	------	----------------	-------------------



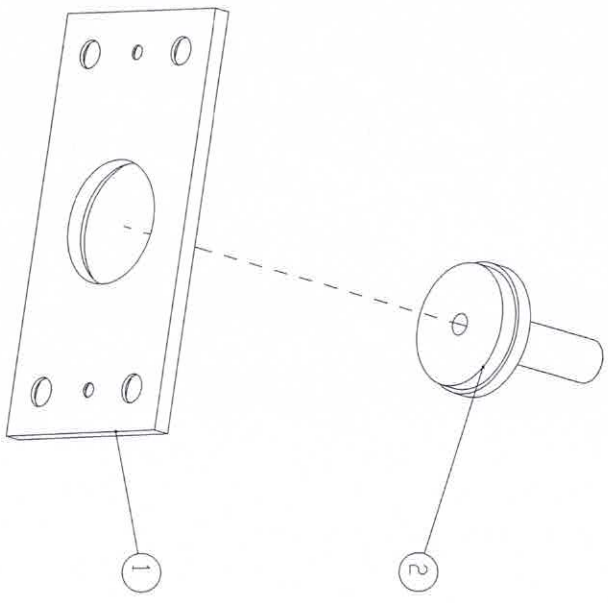
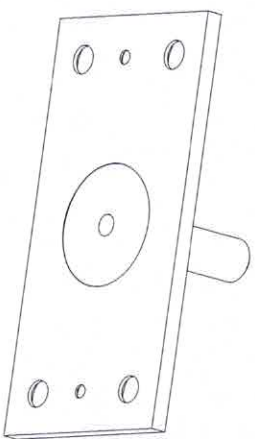
Item	P/N	Description	QTY.
1	S/7201890	ASSY FILTER FOAM CASSETTE I-MDP	1
2	7201890/8	COVER FILTER CASSETTE I-MDP I YELLOW	1
3	7201891/8	FILTER CASSETTE I-MDP I YELLOW	1
4	7201892	FILTER FOAM CASSETTE I-MDP	1
	890469209934A	GREEN ARROW + INSTRUCTION MARK	1
	ND SHOW		

SMT-FCT DongGuan Ltd.

THE EXPLODED VIEW OF THE PRODUCTS
ASSEMBLY AND MODEL OF CLEANING PRODUCTS

TITLE	IMDPX.LTK.1200C EXPLODED VIEW				REV.	E
MATL	N/A	DWN BY	ANDY XIE	SCALE	1/10	
THROUG INSTRUMENT	N/A	CHK BY		SHEET	6	DF 22
COLOR	N/A	APP BY		DWG NO.	IMDPX.LTK.1200C EXPLODED VIEW	
				APP FILE	IMDPX.LTK.1200C	A3

SMT REVISION BLOCK			
ISSUE	REVISION	ZONE	CHK BY & APP DATE



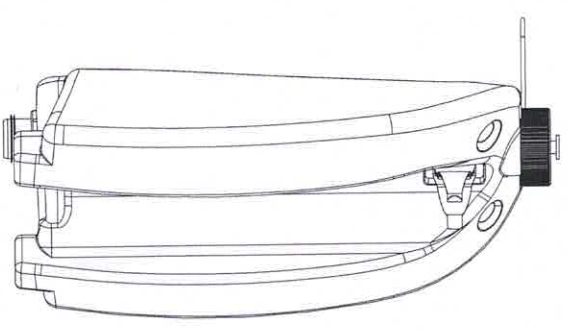
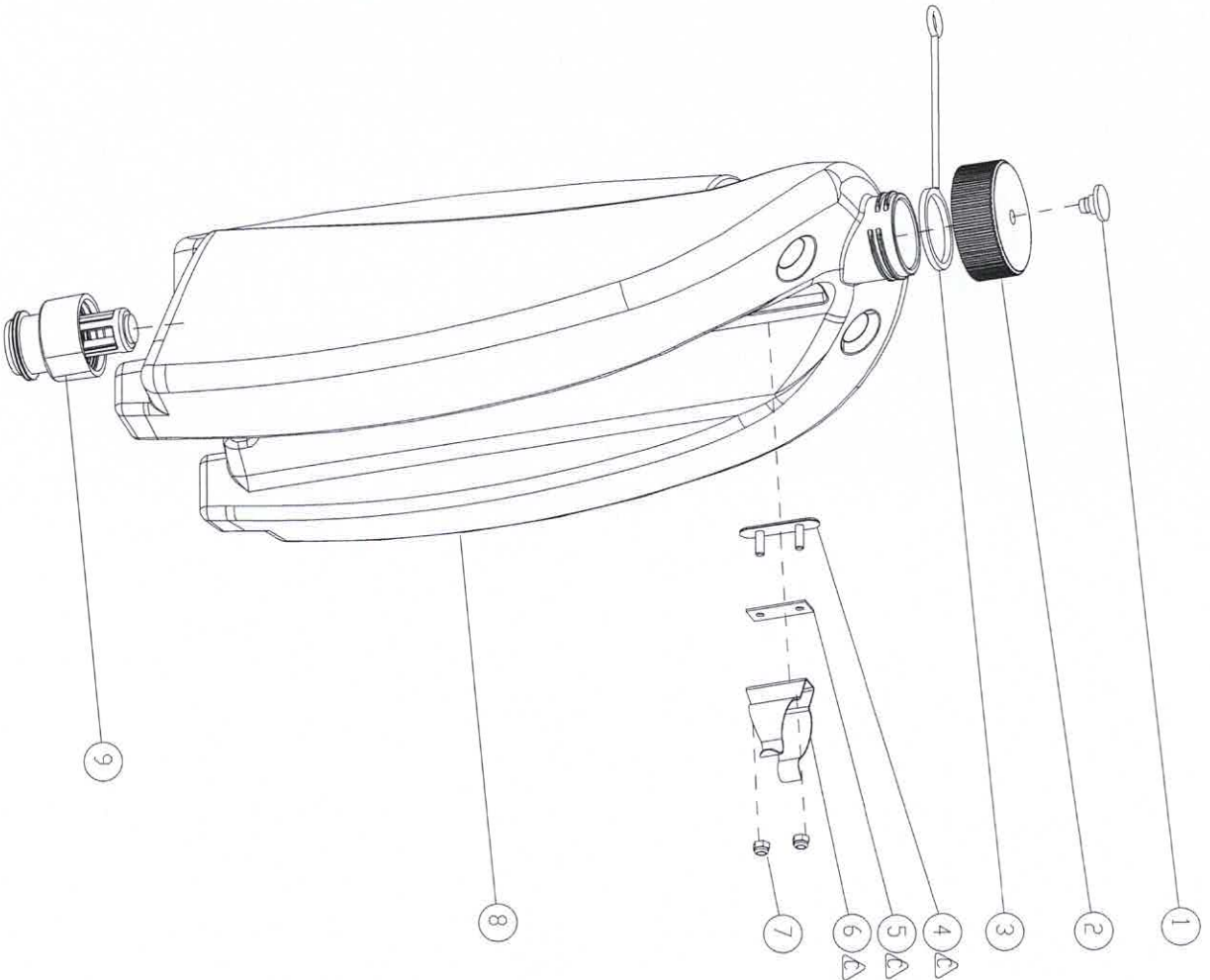
Item	P/N	Description	QTY.
1	S/7200312	HINGE WELDING ASSY TOP UNIT (VER2)	1
2	7200311	HINGE CONSTRUCTION PLATE TOP UNIT (VER1)	1
2	7200320	HINGE AXIS TOP UNIT (MCH 1416-1001-2027)	1

SMT-FCT Dongguan Ltd
 THE FOUNDRY OF CLEANING PRODUCTS
 ASSEMBLY AND MODEL OF CLEANING PRODUCTS

title	IMPPXL.TLK.1200C EXPLODED VIEW		1-MDP	REV.	E
DATE	N/A	DATE	BY	SCALE	1/10
DESIGNER	ANDY XIE	DATE	BY	SHEET	7 OF 22
CHK BY		DATE	BY		
APP BY		DATE	BY		
DWG NO.	IMPPXL.TLK.1200C EXPLODED VIEW				
PLT FILE	IMPPXL.TLK.1200C				
DR		A3			

SMT REVISION BLOCK

ISSUE	REVISION	ZONE	CHK BY	CHK & APP DATE



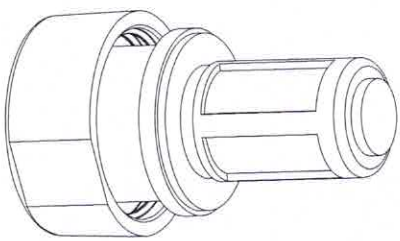
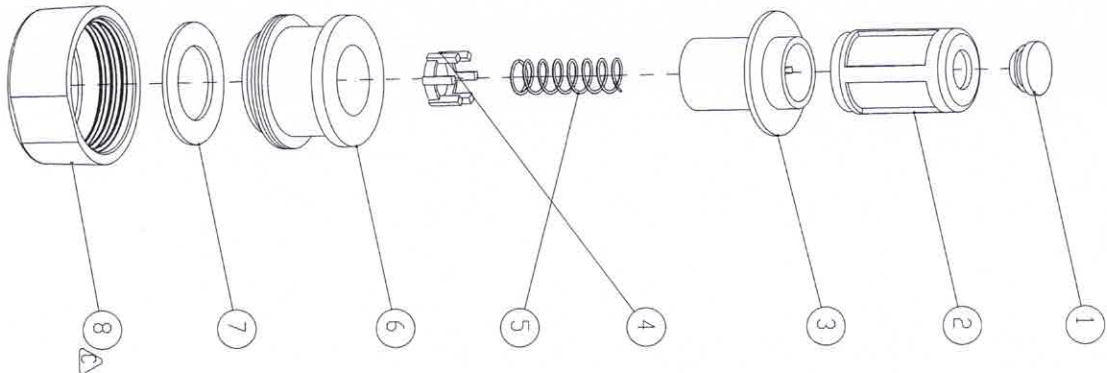
Item	P/N	Description	QTY.
1	S.72.0081.1	ASSY CLEAN COMPARTMENT COMPLETE (NEW)	1
1	72.0254.1	SLEEVE CAP HOLDER CLEAN TANK	1
2	72.0251.797	CAP WITH HOLE, Kleur: Blue .797 (P312C)	1
3	72.0252.0	CAP HOLDER	1
4	72.0253.0	HOLDER PLATE CLIP CLEAN TANK	1
5	72.0290.0	RUBBER CUSHION FOR METAL CLIP	1
6	72.0288.0	METAL CLIP CLEAN TANK	1
7	72.0261.0	NUT M4 NYLON STAINLESS	2
8	72.0081.10	CLEAN COMPARTMENT CAP VERSION	1
9	S.72.0085.0	WATER COUPLING VERSION 2	1

SMT-FCT Donoguan Ltd.
 THE FRIENDLY FAMILY
 ASSEMBLY AND HOLDER OF CLEANING PRODUCTS

TITLE	IMDPXL.TLK.1200C EXPLODED VIEW	W. NO.	I-MDP	REV.	E
DATE	N/A	DWN BY	ANDY XIE	SCALE	1/10
TECHNICAL	N/A	CHK BY		SHEET	8 OF 22
DRAW	N/A	APP BY		DWG NO.	IMDPXL.TLK.1200C EXPLODED VIEW
				APP FILE	IMDPXL.TLK.1200C
					A3

SMT REVISION BLOCK

ISSUE	REVISION	ZONE	CHG BY	CHK &
			DATE	APP DATE



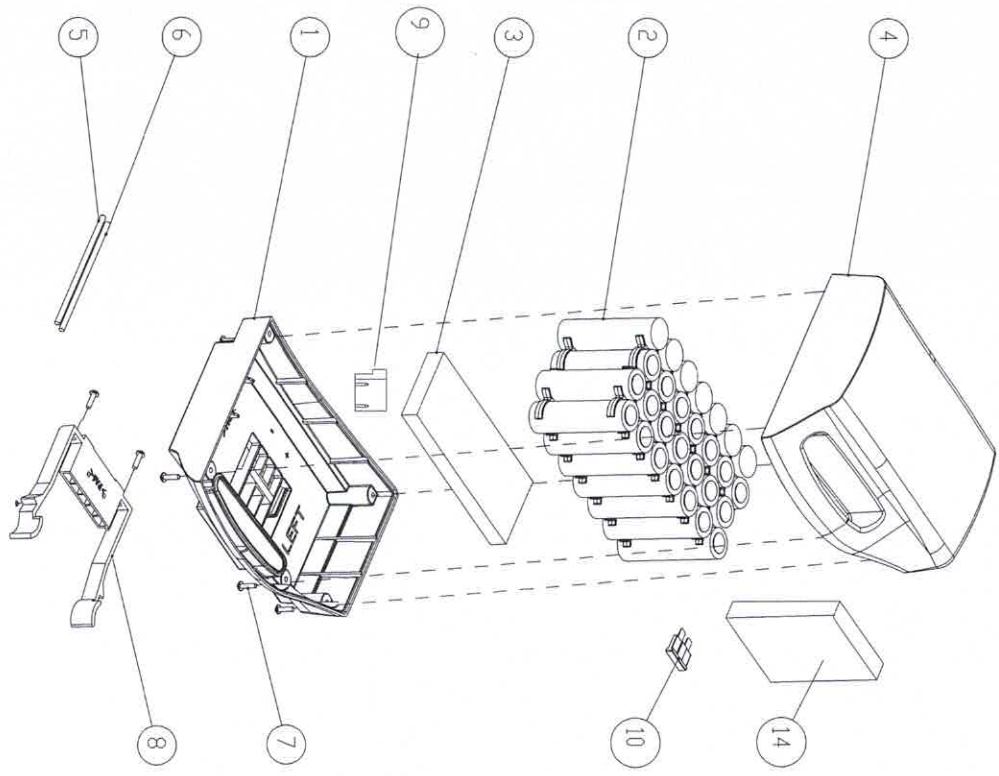
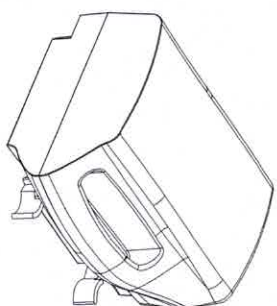
Item	P/N	Description	QTY.
1	5.72.0085.0	WATER COUPLING VERSION 2	1
2	72.0192.6	RUBBER BLOCK FILTER	1
3	72.0085.0	WATER COUPLING FILTER [MCH 1416-1001-2188]	1
4	72.0192.2/357	HOUSING OF VALVE GREY	1
5	72.0192.4/357	VALVE WATER COUPLING GREY	1
6	72.0192.3	SPRING WATER COUPLING	1
7	72.0192.1	HOUSING WATER COUPLING	1
8	72.0192.5	RUBBER GASKET ID 19mm, OD31mm, T=1.5mm,	1
	72.0289.0/8	METAL CAP WATER COUPLING YELLOW	1

SMT-FCT Donnguan Ltd.
 THE FREEDOM FAMILY
 ASSEMBLY AND MOLD OF CLEANING PRODUCTS

TITLE	IMPXL.TLK.1200C EXPLODED VIEW	REV	E
DATE	1/10	REV	
WFL	N/A	APP BY	ANDY XIE
THESIS/REVISION	N/A	CHK BY	
DLDR	N/A	APP BY	
ENG MGR	IMPXL.TLK.1200C EXPLODED VIEW	SHEET	9 OF 22
DWG FILE	IMPXL.TLK.1200C		A3

SMT REVISION BLOCK

ISSUE	REVISION	ZONE	CHG. BY	CHK. &
			DATE	APP. DATE



Item	P/N	Description	QTY.
1	S.72.0074.2BS	ASSY BATTERY PACK BLUE [LEFT] BMS	1
2	72.0074.2	BATTERY PACK HOUSING BOTTOM LEFT WHITE [MCH 1416-1001-2133]	1
3	72.0131.0/A	BATTERY PACK CELLS WITH BMS	1
4	04.0053.1	SIDE FOAM MOTOR VACUUM	1
5	72.0078.2	BATTERY PACK HOUSING TOP LEFT [MCH 1416-1001-2134] Klaur: W	1
6	72.0129.0	BATTERY CONNECTOR + WIRES 14AWG, RED, L=250mm,	1
7	72.0130.0	BATTERY CONNECTOR + WIRES 14AWG, BLACK, L=250mm,	1
8	72.0057.0	SCREW WN 5451 25X10 EJOT DELTA PT [MCH 1416-1001-2150]	6
9	72.0075.797	BATTERY CONNECTOR FEMALE BLUE LEFT [P312C]	1
10	72.0218.0	LIMITATION BLOCK FEMALE CONNECTOR	1
11	72.0184.0	30A FUSE	1
12	72.0170.0	BUBBLE WRAP BAG 250X210	1
13	89.0469.2099.05	SERIAL NO. BATTERY	1
14	89.0469.2099.06BM	STICKER SAFETY ADVISE FOR BATTERY LEFT BMS	1
	72.0284.0	BMS BOARD IMOP BATTERY	1

SMT-FCI Donoguan Ltd.
THE FERRIS FAMILY
ASSEMBLY AND HOLDING OF CLEANING PRODUCTS

TITLE	IMPXLT.LK1200C EXPLODED VIEW	REV.	1-MOP	E
DATE	N/A	CHK BY	ANDY XIE	SCALE
	N/A	APP BY		1/10
				22
				A3